

McDowell Creek Greenway

Existing McDowell Creek Greenway (at Sam Furr Road) to existing Torrence Creek Greenway (at Gilead Road)

Public Information Session: December 16, 2021



Mecklenburg County
Park and Recreation

Getting to know Zoom



Mecklenburg County
Park and Recreation



The screenshot shows a Zoom meeting window. At the top, a green banner reads "You are viewing Park & Rec's screen". Below this is a participant gallery with tiles for "You", "Park & Rec", "Your Neighbor", "The Consultant", "Elected Official", and "Another Neighbor". On the right, a "Participants (8)" sidebar lists the same names with icons for mute, video, and chat. Below the sidebar is a "Chat" section with a search bar and a "Type message here..." input field. At the bottom, a toolbar contains icons for "Unmute", "Start Video", "Participants", "Chat", "Share Screen", "Record", "Reactions", and "Leave".

Stay muted!
Red line through microphone = muted

Video optional.
Red line through video = off

Unmute Start Video

Ask questions and add comments to the chat throughout the meeting!

Project Team



Mecklenburg County
Park and Recreation



Kimley»»Horn

Expect More. Experience Better.



FROEHLING & ROBERTSON

Engineering Stability Since 1881

Geotechnical Engineering

Civil Engineering , Landscape
Architecture & Structural
Engineering



Surveying



Geotechnical
Engineering

McDowell Creek Fun Facts

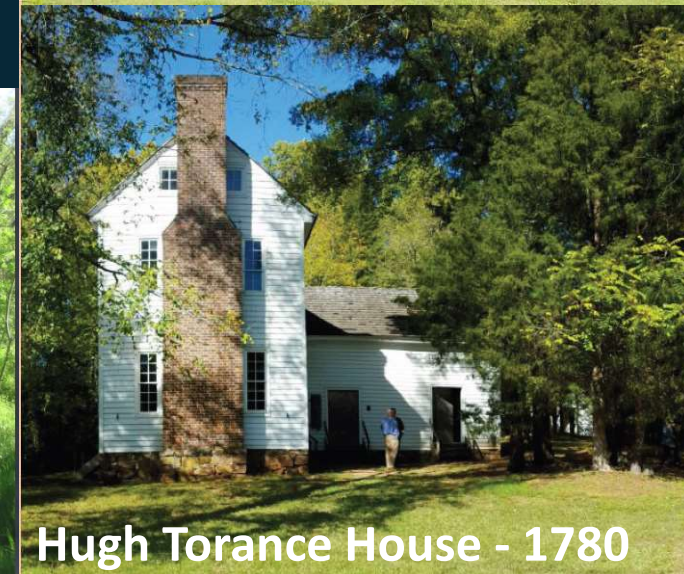
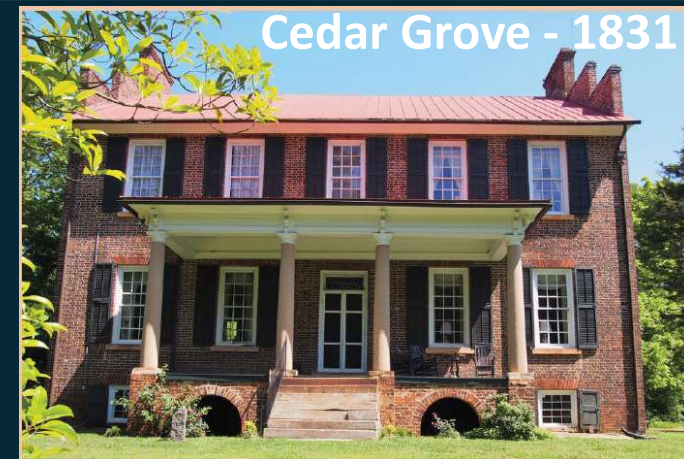


Mecklenburg County
Park and Recreation



- Named after Charles McDowell
- Important to **drinking water supply**
- 1990 – 2020: 465% Population Growth

McDowell Creek Stream Restoration



Greenways Overview



Mecklenburg County
Park and Recreation



Little Sugar Creek Greenway

- Vegetated natural buffers that help protect water quality, reduce the impacts of flooding and provide wildlife habitat.
- Linear parks that connect people and places
- Trails that provide recreation, transportation, fitness and economic benefits for all to enjoy.
- Promote diversity, health, quality of life, good business and stretch our tax dollars.

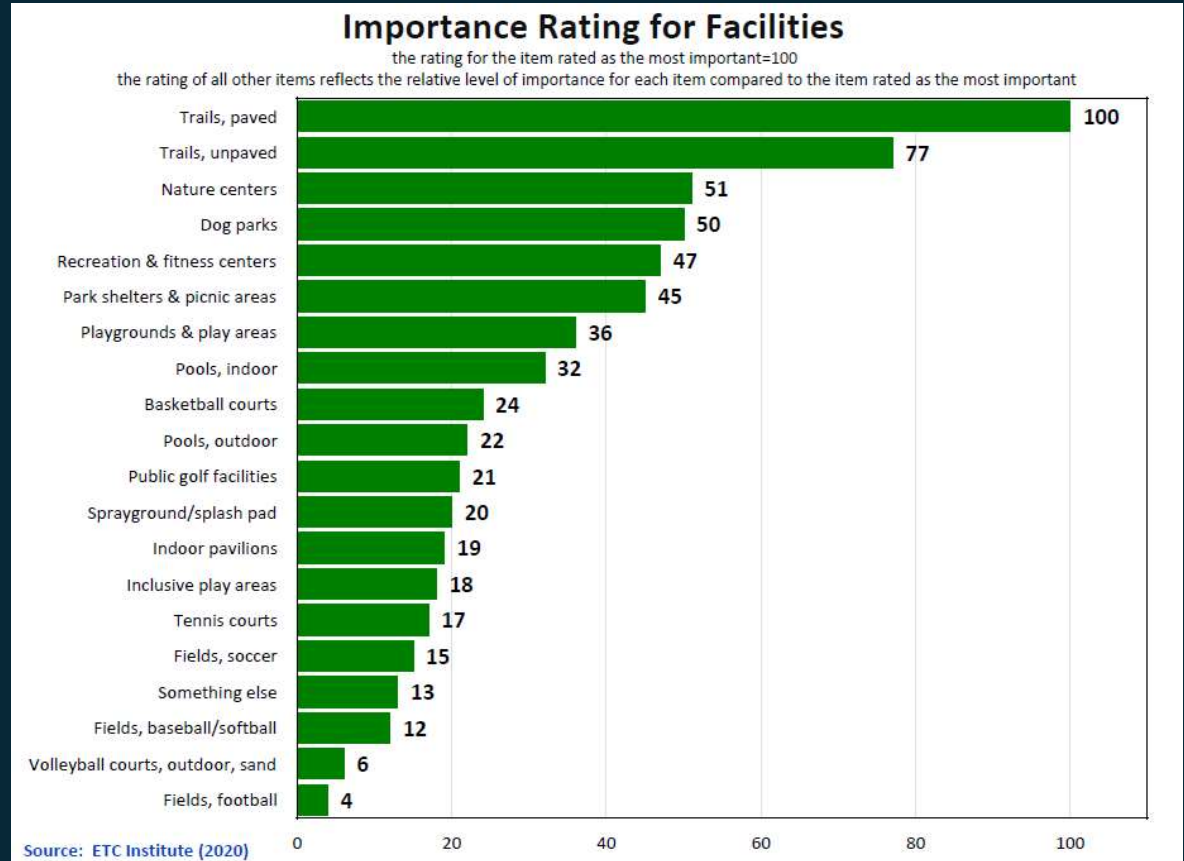
Greenways Overview



Mecklenburg County
Park and Recreation



- In 1966, the Charlotte-Mecklenburg Master Plan for recreation recommended greenways “as logical natural elements useful in creating a sense of physical form and order within the city.”
- **#1 Amenity** requested by the residents today
- Greenway Master Plan includes 308 miles of greenway trails and 200+ miles of urban trails



Accelerated Greenway Plan



Mecklenburg County
Park and Recreation

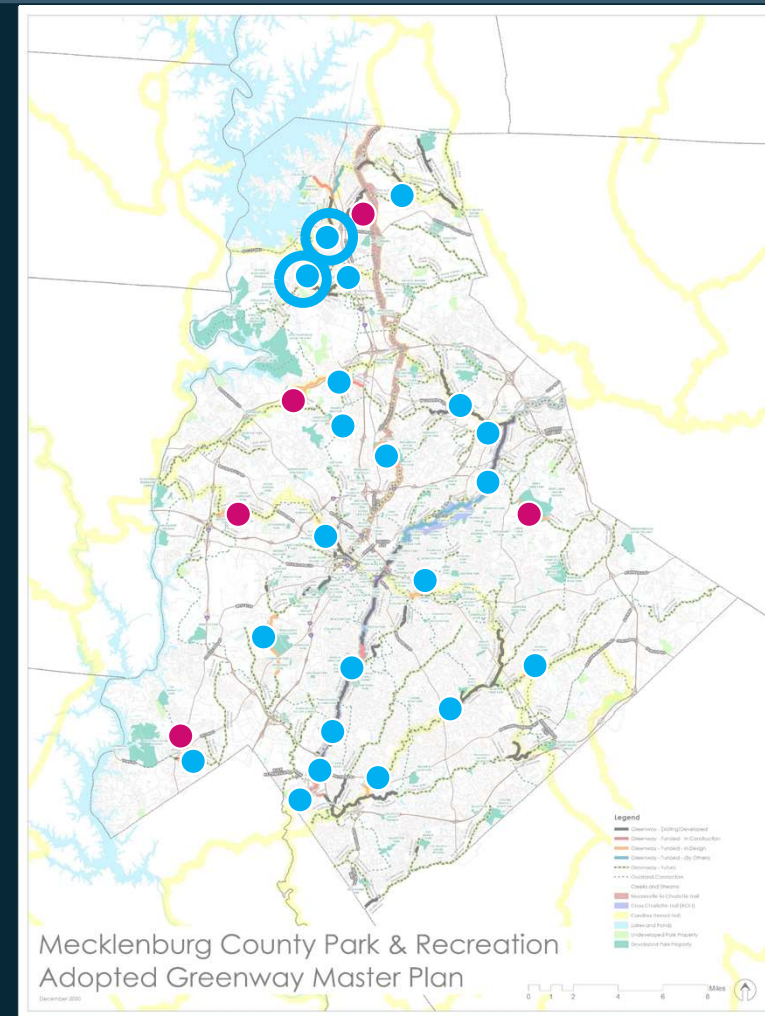


- Complete **30 miles** of greenway by **2023!**

Miles	Greenway Development Status
59	Existing/Developed
8	Funded – In Construction (Includes City + Town projects)
28	Funded – In Design
3	Funded – By Others
~98	Total Greenway Miles funded through FY2023

● CIP Funded Projects

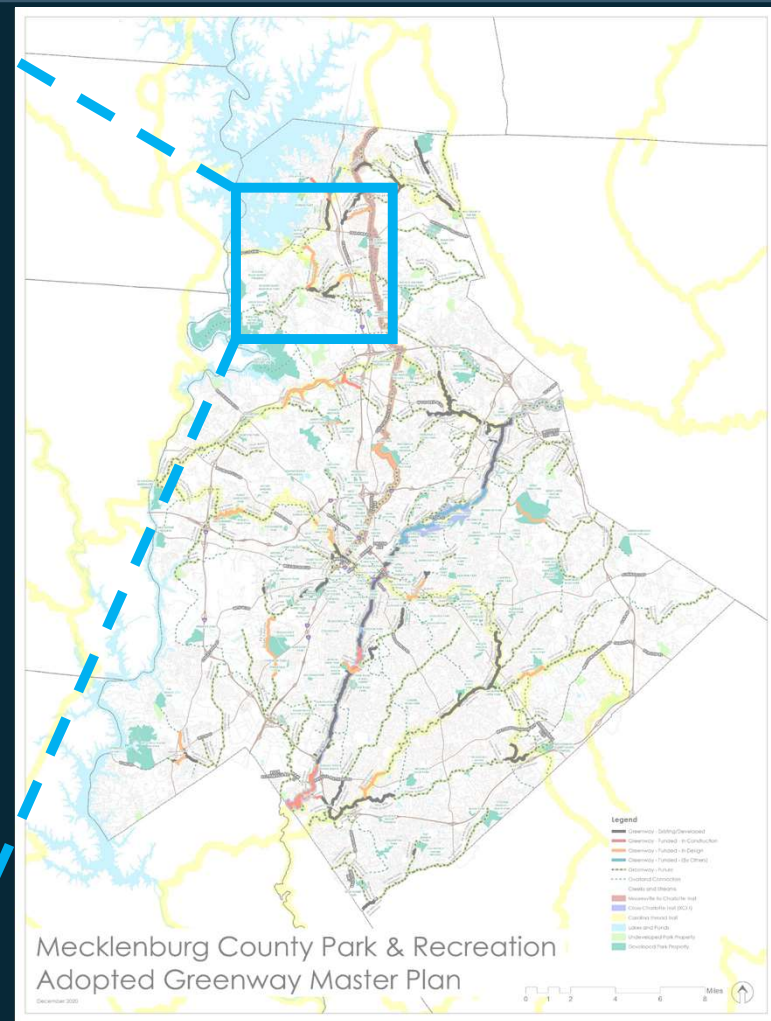
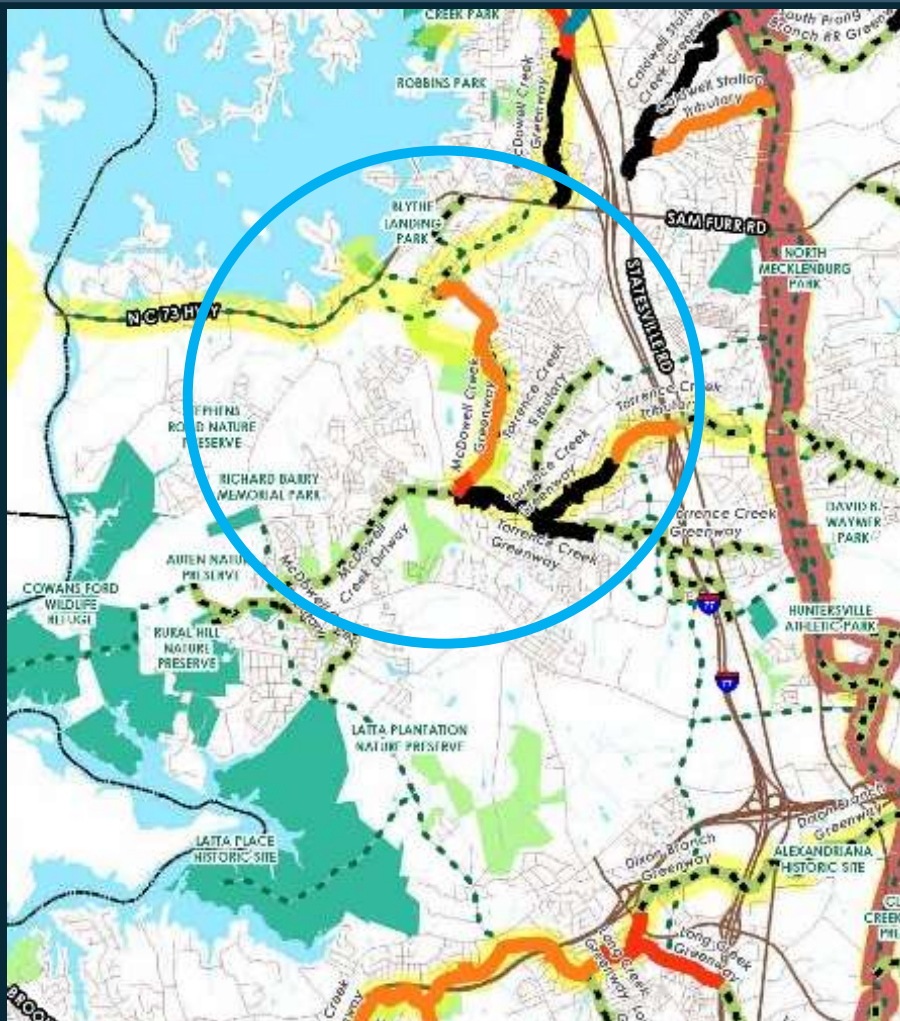
● Accelerated Greenway Projects



McDowell Creek Greenway



Mecklenburg County
Park and Recreation



Mecklenburg County Park & Recreation
Adopted Greenway Master Plan

Overview Map



Mecklenburg County
Park and Recreation

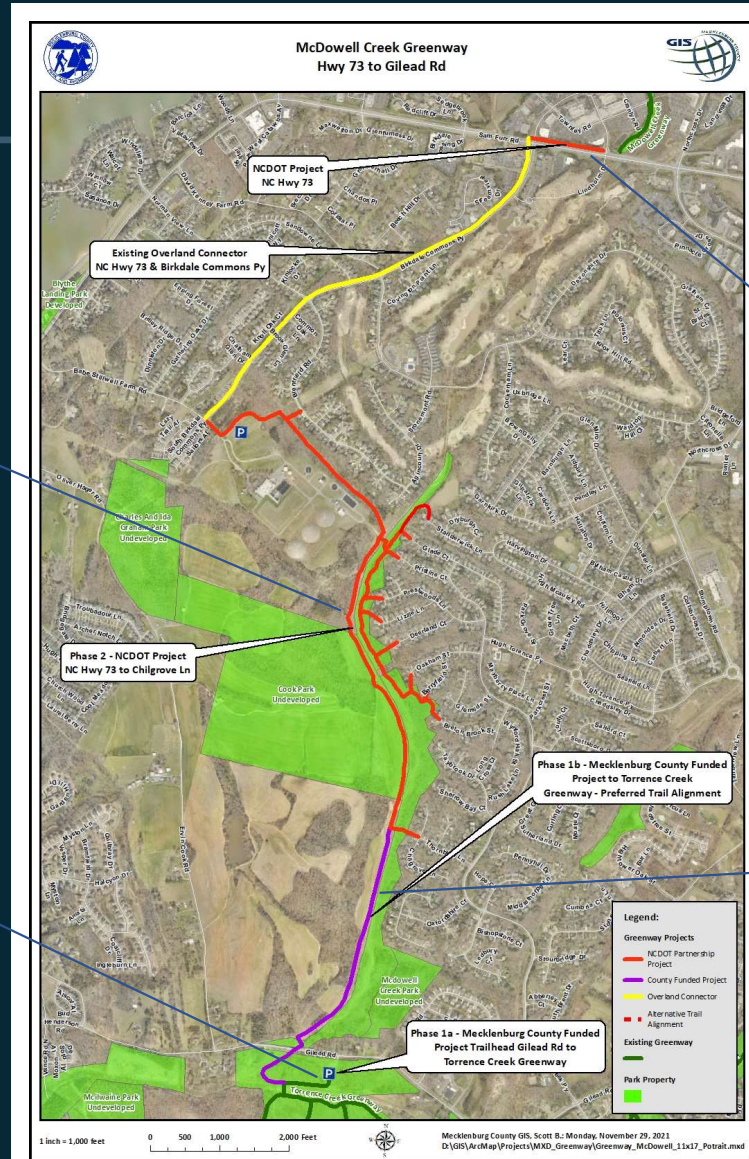


Phase 2

Phase 3

Phase 1A

Phase 1B



Phase 1A



Mecklenburg County
Park and Recreation



Phase 1A



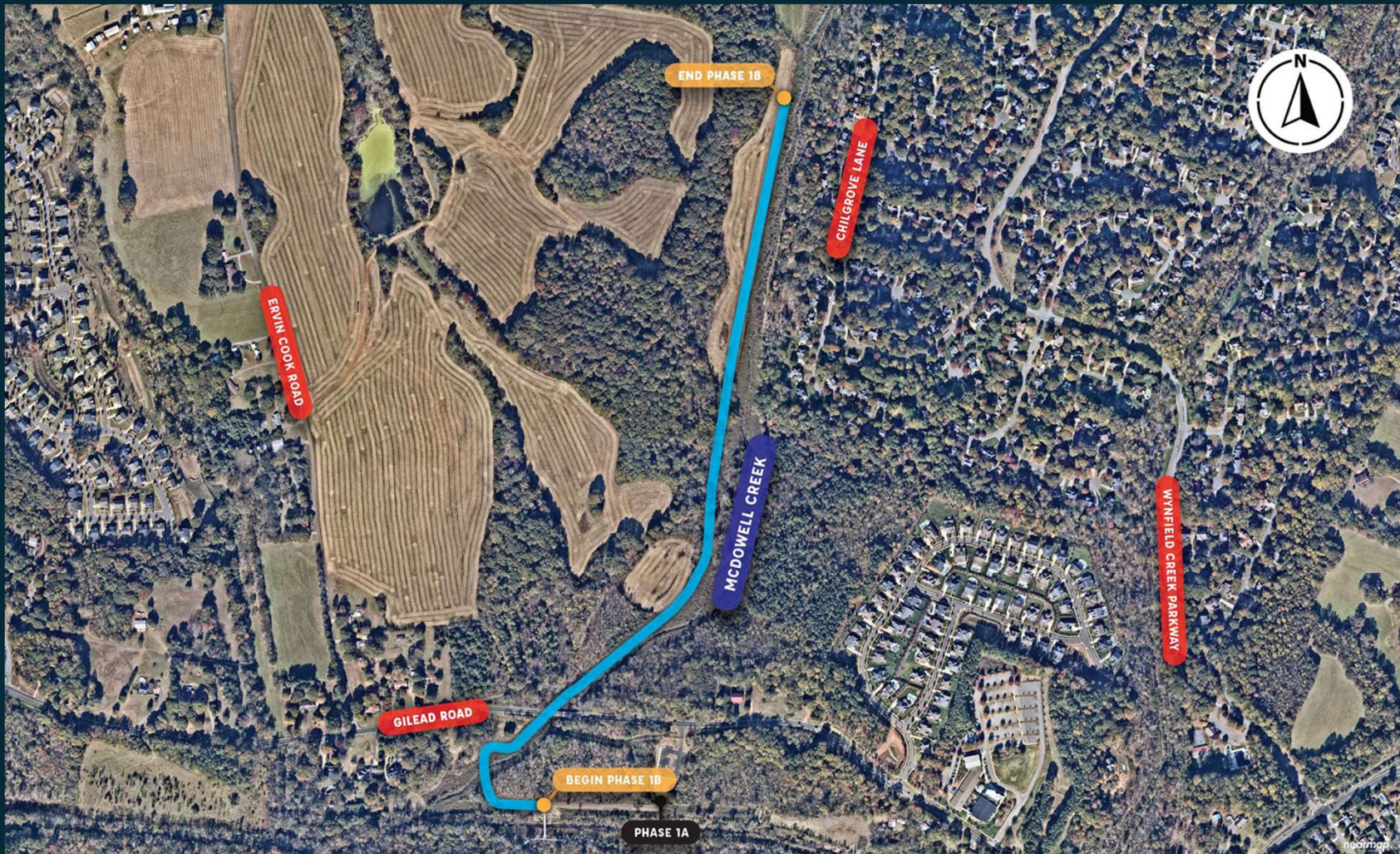
Mecklenburg County
Park and Recreation



Phase 1B



Mecklenburg County
Park and Recreation



Phase 1B



Mecklenburg County
Park and Recreation



Rock Outcrop



Gilead Road



McDowell Creek

Phase 2



Mecklenburg County
Park and Recreation



Phase 2



Mecklenburg County
Park and Recreation



Treatment Plant

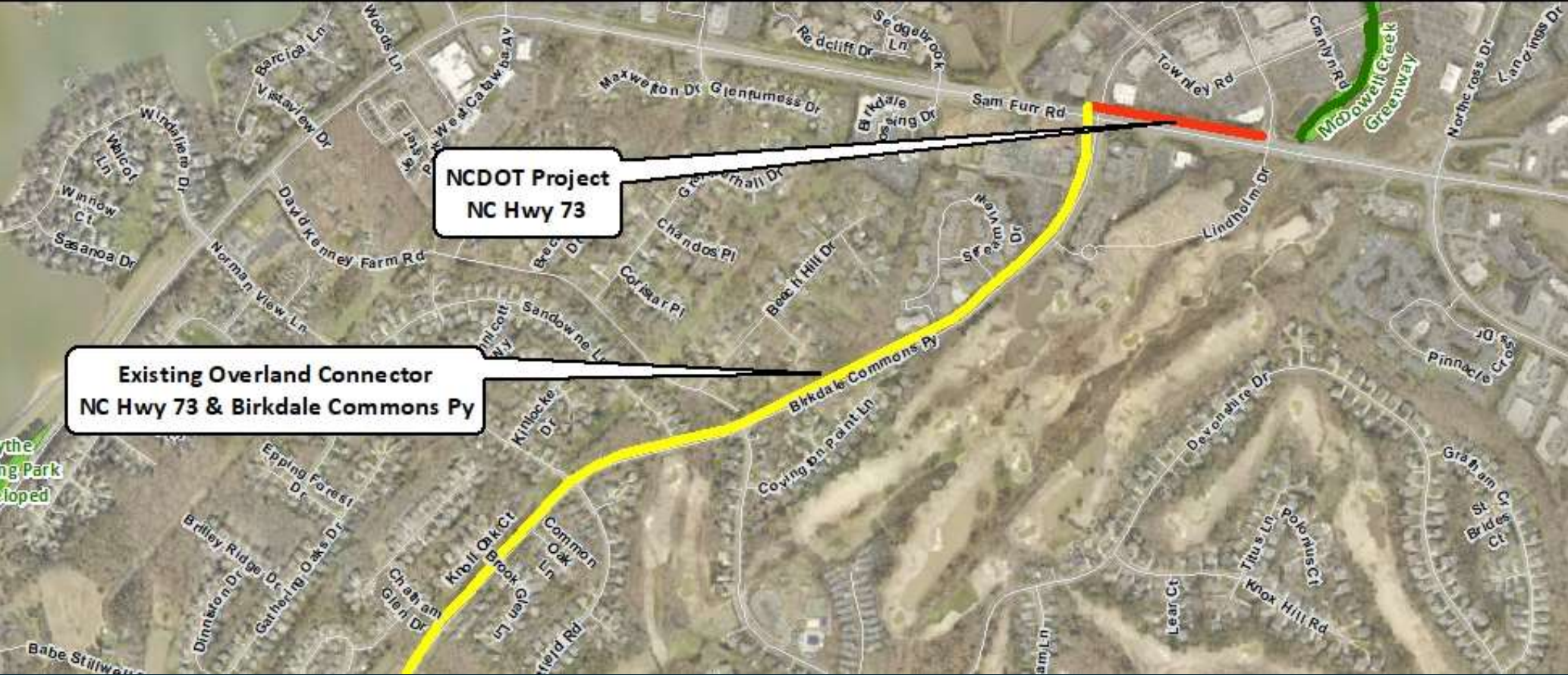


Existing Dirtway at Wynfield Forest

Phase 3



Mecklenburg County
Park and Recreation



Planning Process



Mecklenburg County
Park and Recreation



- 2015: McDowell Creek Stream Restoration Project
- Summer 2015: Preliminary Alignment and Phasing Study began
- November 10, 2015: Public Information Meeting
- 2016: \$2.5M CIP for Phase 1
- 2019: \$6.8M CIP & NCDOT for Phase 2
- 2020: \$2.2M CIP & NCDOT for Phase 3
- 2015 – 2021: Design and Real Estate Acquisitions



Project Schedule



Mecklenburg County
Park and Recreation



Phase 1a: Torrence Creek Greenway to Gilead Road

- Construction complete Summer 2021

Phase 1b: Gilead Road to Cook Farm

- Design 100% complete
- Construction start ~ Spring 2022

Phase 2: Chilgrove Lane to Highway 73

- Design 75% complete
- Construction start ~ Fall 2022

Phase 3: Highway 73 Crossing

- On-hold



Example Trailhead



Mecklenburg County
Park and Recreation



Typical elements found @ trailheads may include:

- Parking
- Restroom
- Drinking Fountain
- Maintenance Outpost



Photo of McDowell Creek Greenway (Gilead Road)



Photo of McAlpine Creek Greenway Parking and Rest Area (Johnston Road)



Little Sugar Creek Greenway (Tyvola Road to Huntingtowne Farms Park)

Example Bridge



Mecklenburg County
Park and Recreation



Photo from
Little Sugar
Creek Greenway

Example Greenway Underpass



Mecklenburg County
Park and Recreation



Photo from Little
Sugar Creek
Greenway at
Archdale Road

Example Boardwalk



Mecklenburg County
Park and Recreation

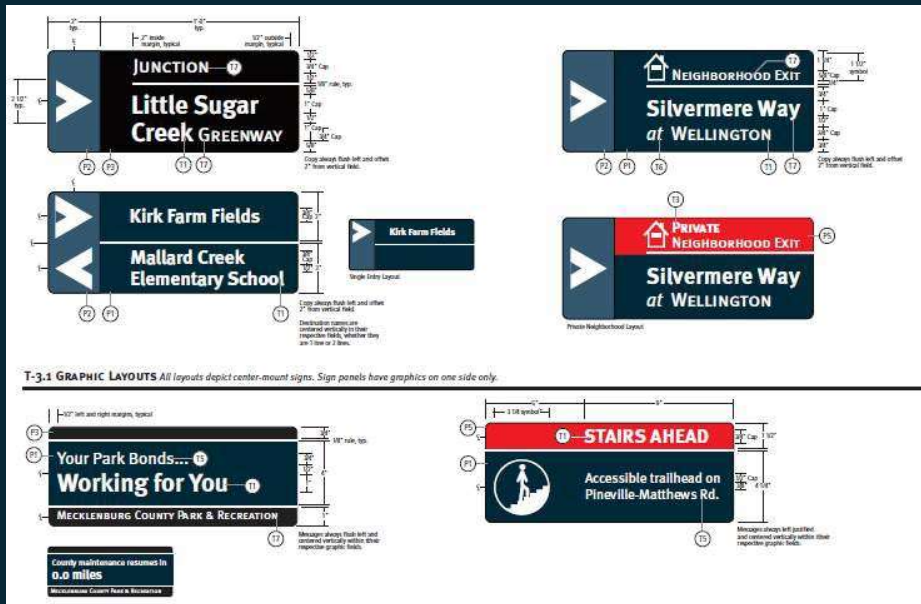


Photo from
Toby Creek
Greenway

Example Signage

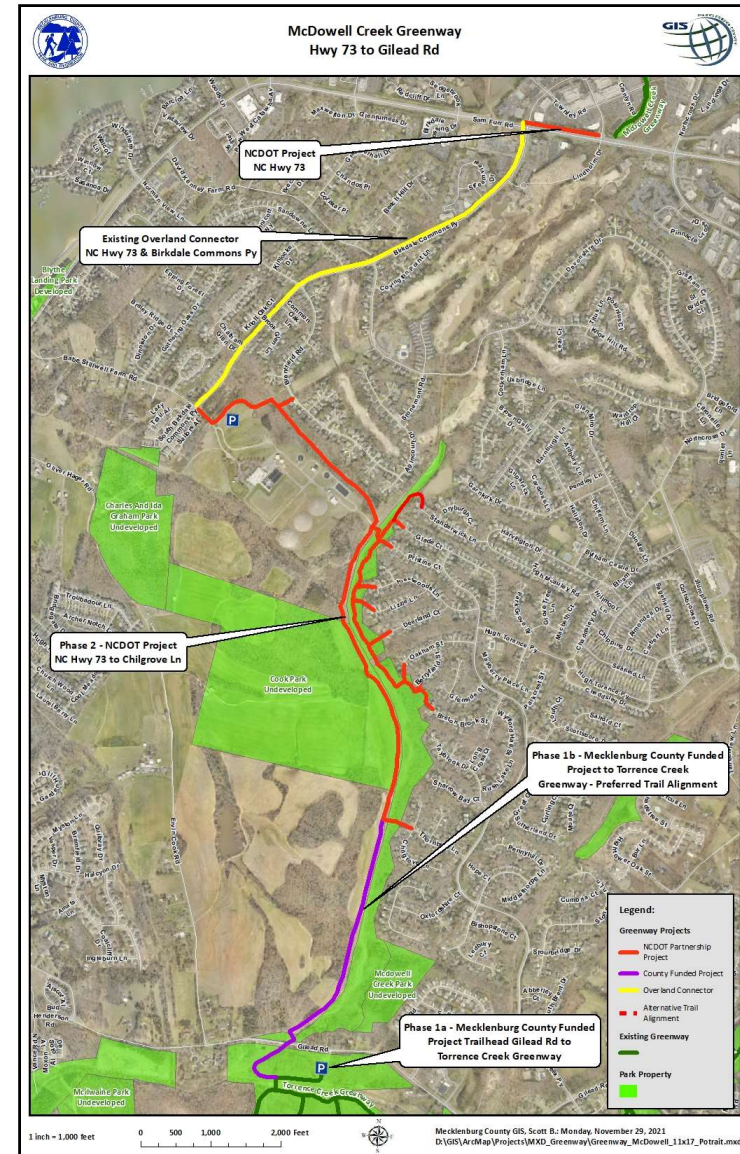


Mecklenburg County
Park and Recreation



Questions?

[PublicInput.com/ McDowell](https://PublicInput.com/McDowell)





Thank You!

PublicInput.com/McDowell

Contact:

Joyce Figueroa
Greenway Trail Planner (Segments 1a and 1b)
704-962-2348
Joyce.Figueroa@MecklenburgCountyNC.gov

Gwen Cook
Greenway Trail Planner (Segments 2 & 3)
980-314-1036
Gwen.Cook@MecklenburgCountyNC.gov

Robert Billings
Project Manager
980-314-2503
robert.billings@mecklenburgcountync.gov