

# brackenridge park

A POSTCARD PLACE LOST IN TIME

PUBLIC STAKEHOLDER MEETING #01

22 MARCH 2022



## Contactless Sign In

Brackenridge Park 2017 Bond Project - Public Meeting - March 22, 2022



 **PublicInput.com/N8712**

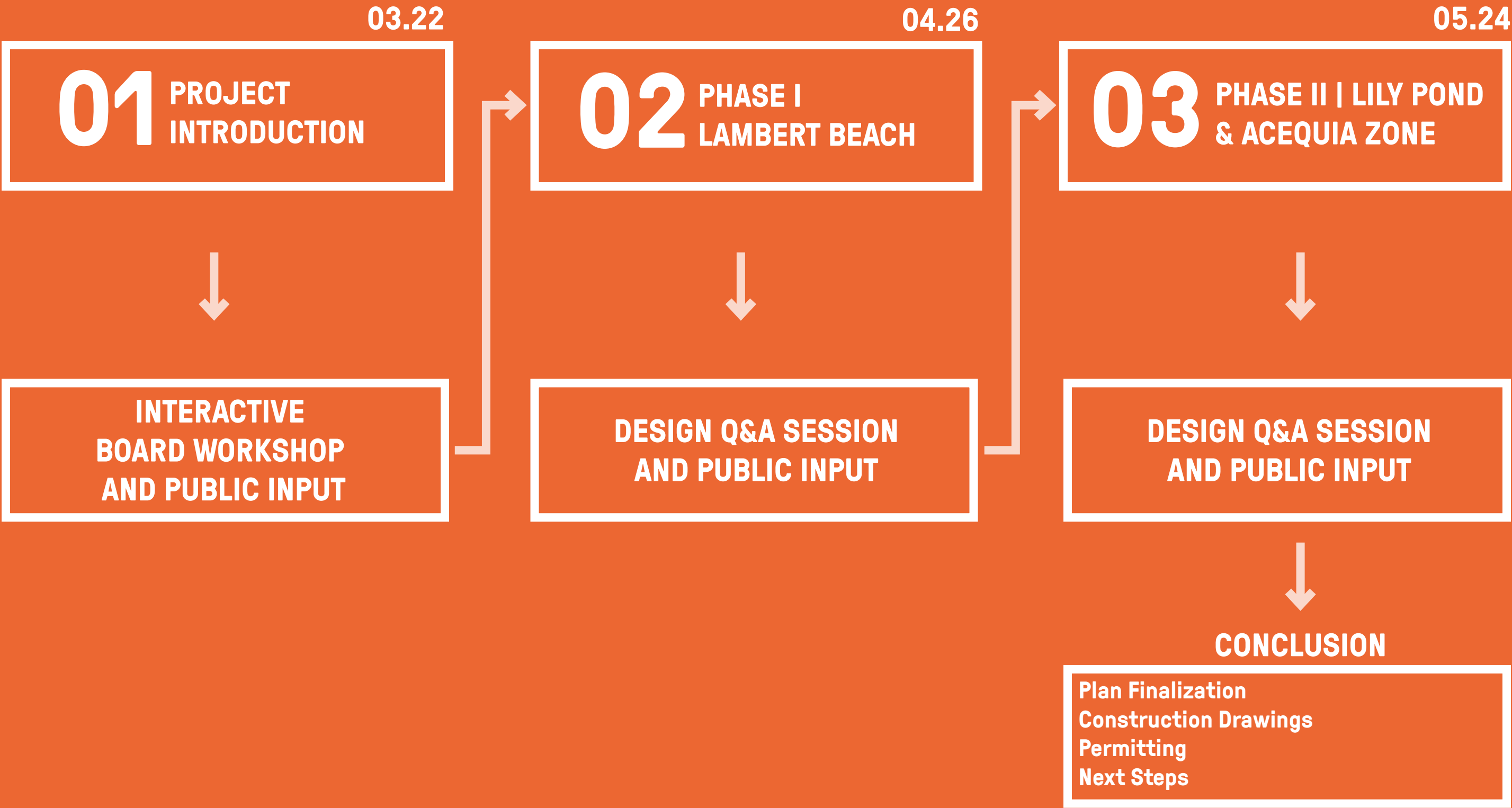


---

## AGENDA

**01** introduction // **02** resource documents // **03** 2017 bond project scope // **04** project considerations // **05** interactive workshop

**MEETING SERIES STRUCTURE**





# 01 // INTRODUCTION

# INFORM

LOCATION, SCOPE, & IMPORTANCE OF THE 2017 BOND PROJECT

# REVIEW

GUIDING DOCUMENTS & REGULATORY REQUIREMENTS

# COMMUNICATE

IMPORTANT ISSUES & PROJECT CONSTRAINTS

# LISTEN

TO COMMUNITY FEEDBACK ON ISSUES AND CONCERNS

# SHARE

EXPERT KNOWLEDGE REGARDING PARTICIPANT QUESTIONS

# RESPOND

TO COMMUNITY FEEDBACK, ENVIRONMENTAL EVIDENCE, & HISTORICAL PRECEDENTS WITHIN THE DESIGN OF THE SITE



## 02 // RESOURCE DOCUMENTS



**GUIDING DOCUMENTS & REGULATORY REQUIREMENTS**

- 01

2017 BRACKENRIDGE MASTER PLAN

City of San Antonio Parks Department | Brackenridge Park Conservancy | Rialto Studio | Ford Powell Carson
- 02

2019 CULTURAL LANDSCAPE REPORT

Brackenridge Conservancy | Reed Hildebrand | Susan Turner Associates

2019 LADYBIRD JOHNSON WILDFLOWER CENTER ECOLOGICAL SITE REPORT

Brackenridge Conservancy | San Antonio River Authority | Lady Bird Johnson Wildflower Center
- 03

STATE ANTIQUITIES LANDMARK (SAL)
- 04

NATIONAL REGISTER HISTORIC PLACES
- 05

SECTION 106 REVIEW (NEPA)



# BRACKENRIDGE PARK MASTERPLAN ENDORSED STRATEGIES

RESTORE NATURAL PARK FEATURES  
& IMPROVE WATER QUALITY

PRESERVE, RESTORE, AND  
ARTICULATE THE CULTURAL &  
HISTORICAL FEATURES

INCREASE PARK VISIBILITY AND  
PEDESTRIAN ACCESS TO AND  
WITHIN THE PARK



## BRACKENRIDGE PARK

MASTER PLAN

FEBRUARY 21, 2017



CITY OF SAN ANTONIO  
TRANSPORTATION & CAPITAL IMPROVEMENTS



PARKS & RECREATION  
SAN ANTONIO



BRACKENRIDGE PARK  
CONSERVANCY

RABA  
KISTNER

Made-Hill Design  
Ann Benson McGone, LLC

TETRA TECH

MEP DESIGN, PLANNING  
& COMMISSIONING

ADAMS  
ENVIRONMENTAL, INC.

AGCM  
INC.

WS

Alamo  
PAPER-DAWSON  
ENGINEERS

FORD  
POWELL  
& CARSON

RIALTO  
STUDIO

***NATURAL FEATURES***

**WILDFLOWER CENTER DETERMINED BOND SITE TO BE IN LOW ECOLOGICAL HEALTH**

**WFC REPORT ADVOCATES FOR RESTORATION OF NATURAL PROCESSES TO PROMOTE ECOLOGICAL FUNCTION RATHER THAN RESTORING PARK AS TALLGRASS SAVANNAH**

**EMPHASIZES LID TECHNIQUES (RAIN GARDENS, BIOSWALES, FILTER STRIPS)**

**ORIGINAL PARK DESIGN SHOWCASED ECOLOGY AND FOLLOWED THE FLOW OF THE RIVER**

**WFC’S RECOMMENDATIONS DELIVER TREATMENT AND MANAGEMENT PRACTICES TO BALANCE INEVITABLE / CONTEMPORARY HUMAN USE**

**WFC ESA PROVIDES NARRATIVE AND GRAPHIC TREATMENT PLAN THAT “RESPECTS, SHOWCASES, & CONTRIBUTES TO THE SITE’S CULTURAL SIGNIFICANCE”**

**INDIGEONOUS PLANTS DESCRIBED BY SPANISH EXPLORERS: WALNUTS, GRAPEVINES, OAKS, WILLOWS, ELMS, VARIETIES OF TREES, AND FLAX; A VAST ECOSYSTEM OF FISH**

**DIVERSE ECOSYSTEM CHARACTERIZED THE PARK’S ORIGINAL CHARACTER AS A NATURAL “WOODLAND DRIVING PARK” - APPEARED “UNTOUCHED BY THE MODERN GARDENER”**

# ***HISTORIC & CULTURAL FEATURES***

CLR GIVES BRIEF OVERVIEW OF HISTORIC FEATURES ON SITE (ACEQUIA, PUMPHOUSE, RACEWAY, DAM)

DOES NOT MENTION ORIGINAL DESIGN OF LILY POND, FUNCTION OF UPPER LABOR DAM, OR PEDESTRIAN BRIDGE ADJACENT TO PUMPHOUSE OVER RACEWAY

“FORM FOLLOWS WATER” - THE DESIGN OF THE PARK BROKE THE CITY GRID AND IS SIGNIFICANT FOR ITS HISTORICAL SYSTEMS OF WATER DELIVERY

BRACKENRIDGE’S ORIGINAL VISION WAS TO HAVE A CONTINUOUS CONNECTIVE PARK SYSTEM CONNECTED BY THE BOULEVARD; UTILIZED LOW WATER CROSSINGS TO CONNECT VEHICLES TO THE WATER

PARK’S ORIGINAL DESIGN WAS INTENDED TO BE A CONTINUOUS WOODLAND DRIVING PARK RATHER THAN A “PICNIC PLACE” (LAMBERT IMPROVEMENT PERIOD CHANGED THIS)

GEORGE BRACKENRIDGE WAS AN AVID TRAVELER AND STUDIED CULTURES ALONG RIVER LANDSCAPES AND HAD A LOVE FOR PEOPLE OF ALL CULTURES, RIVER AND CULTURAL LANDSCAPES, AND EDUCATION FOR ALL.

PARK DESIGN WAS INFLUENCED BY 5 ERAS OF DESIGN: “THE PICTURESQUE,” “CITY BEAUTIFUL,” “WORKS PROGRESS ADMINISTRATION (WPA),” “HISTORIC PRESERVATION,” AND “ECO PRESERVATION”

EMPHASIZES ETHNOGRAPHIC LAYERS OF CULTURAL NARRATIVES TO BE TOLD THROUGH PARK CIRCULATION:

PREHISTORIC HUNTERS, NATIVE / EARLY AMERICAN, SPANISH, HISPANIC/LATINO, SAN ANTONIAN TEJANOS, GERMAN HILL COUNTRY IMMIGRANTS

PICNICKING TRADITION IS LIKELY A REMNANT OF TEJANO / SPANISH CULTURE; STONE PICNIC TABLES ARE FROM THE WPA PERIOD AND LATER



## **HISTORIC DESIGNATIONS**

### **NATIONAL REGISTER OF HISTORIC PLACES (NRHP)-LISTED PROPERTY**

#### **AREAS OF SIGNIFICANCE:**

- Archeology, Architecture, Art, Conservation, Engineering, Entertainment and Recreation, Industry, Landscape Architecture

#### **CONTRIBUTING ELEMENTS (WITHIN SCOPE) LISTED IN THE NATIONAL REGISTER NOMINATION:**

- Lambert Beach
- Upper Labor Dam & Acequia
- Pumphouse
- Pumphouse Raceway

### **STATE ANTIQUITIES LANDMARK (SAL)**

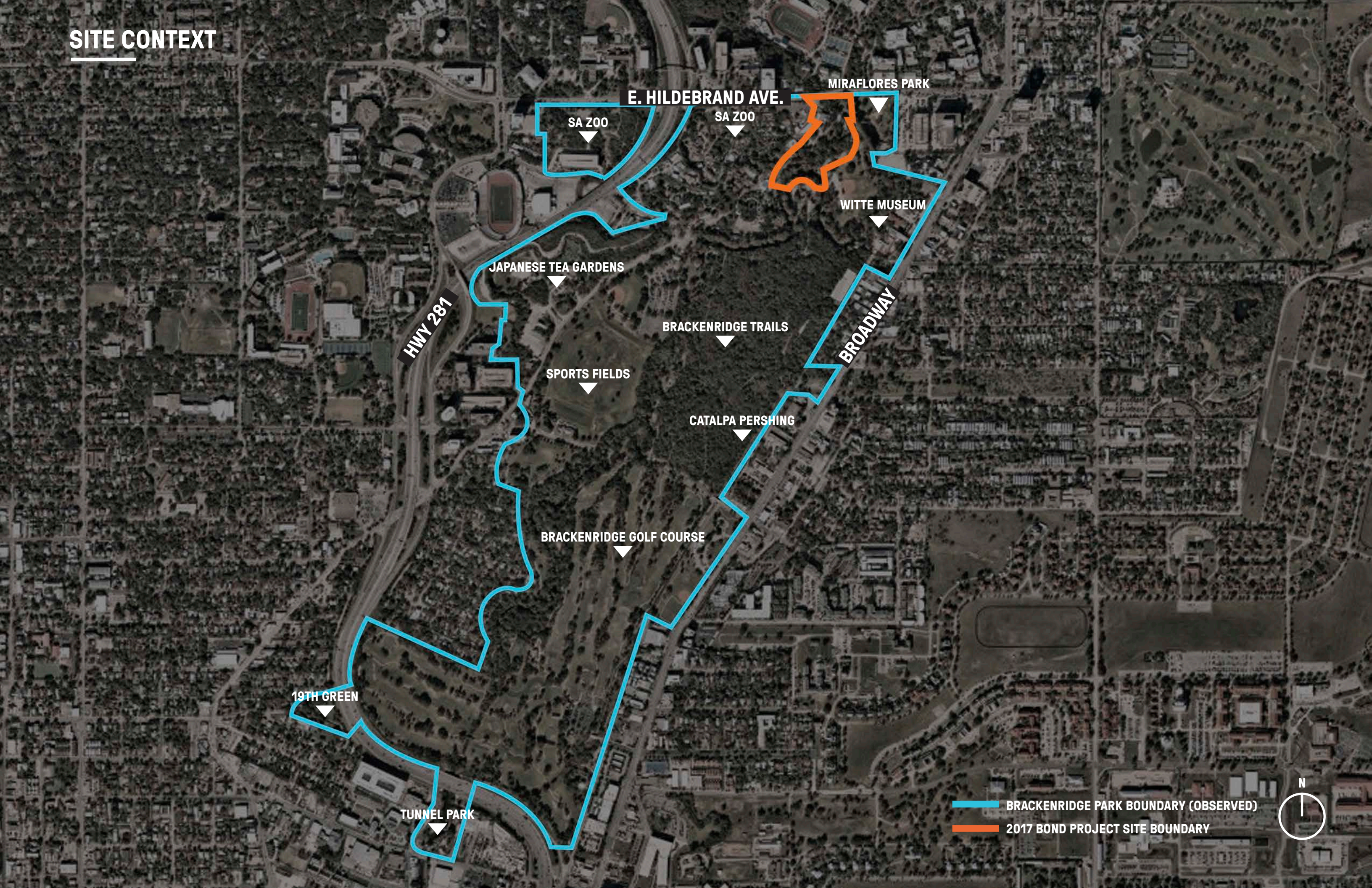
#### **STATEMENT OF SIGNIFICANCE:**

- Specifically Calls Out Areas of Recreation Developed in 1915





SITE CONTEXT



E. HILDEBRAND AVE.

MIRAFLORES PARK

SA ZOO

SA ZOO

WITTE MUSEUM

JAPANESE TEA GARDENS

BRACKENRIDGE TRAILS

SPORTS FIELDS

CATALPA PERSHING

BROADWAY

BRACKENRIDGE GOLF COURSE

19TH GREEN

TUNNEL PARK

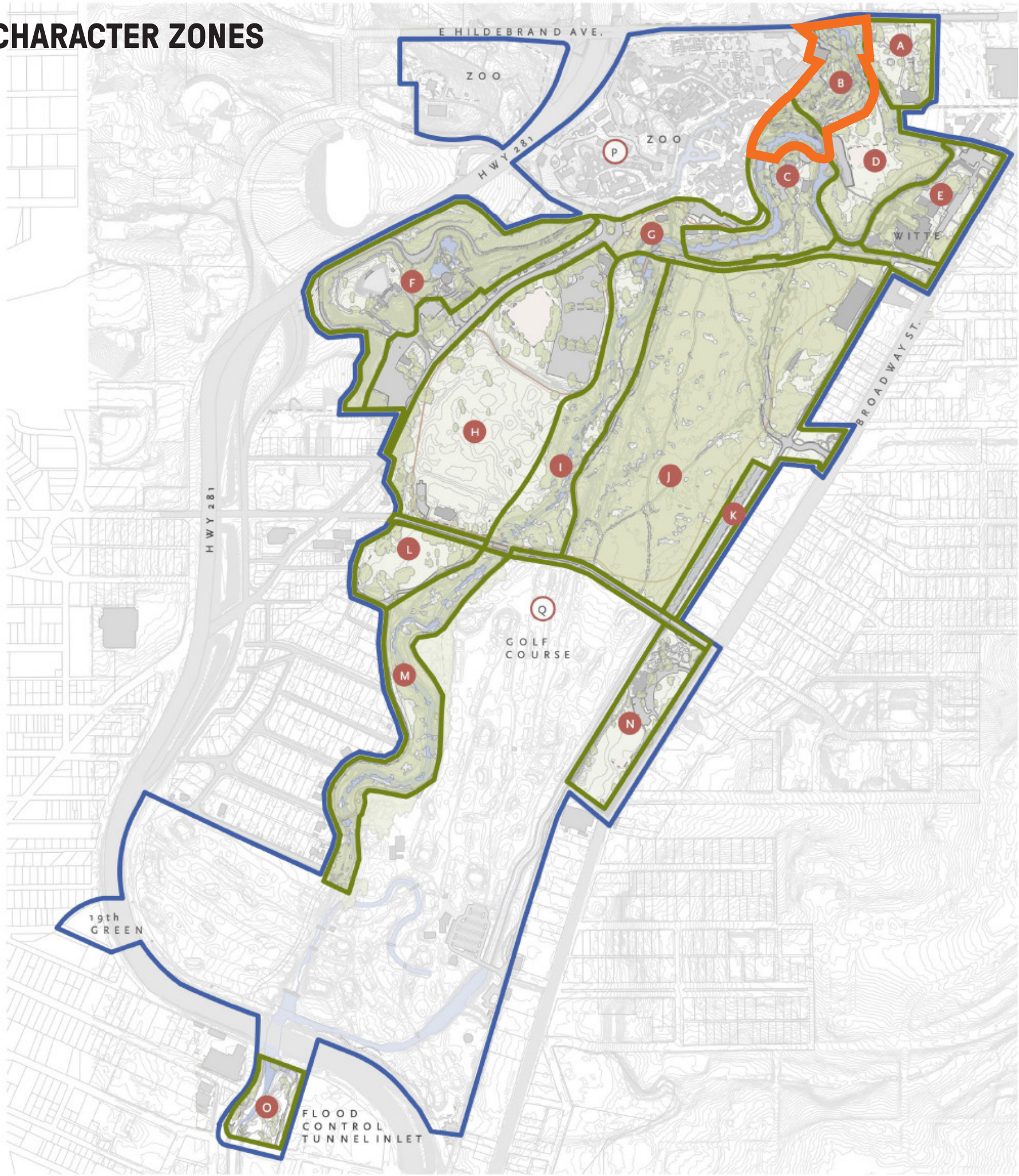
HWY 281

BRACKENRIDGE PARK BOUNDARY (OBSERVED)  
2017 BOND PROJECT SITE BOUNDARY





# SYSTEMS & CHARACTER ZONES



Limit of Brackenridge Park

Character Zones within Area of Study

- Character Zone
- A Miraflores
  - B Lily Pond, Bridges, Acequia
  - C Historic center and Live Oaks
  - D Picnic/Softball at Bend
  - E Witte and edge at Broadway
  - F Quarry village
  - G Transitional zone
  - H Sport fields
  - I Central Riparian
  - J Vegetated Grove
  - K Catalpa Pershing
  - L Davis Park
  - M Southern Riparian
  - N Lions Field
  - O Tunnel Park
  - P Zoo
  - Q Golf Course

## OVERALL SITE PLAN



# PROJECT SCOPE & CULTURAL RESOURCES





## 03 // 2017 BOND SCOPE



# **PROJECT SUMMARY**

## **UPPER LABOR LILY POND**

- LINE POND TO PREVENT LEAKING
- REWATER POND
- REPAIR HISTORIC WALLS
- AERATE POND
- STABILIZE SLOPE

## **UPPER LABOR DAM**

- UNCOVER & STABILIZE DAM
- PROTECT AGAINST RIVER IMPACTS

## **ACEQUIA**

- DREDGE FOREIGN MATERIAL
- STABILIZE STONE LINING
- REVERSE TO HISTORIC FLOW DIRECTION

## **PUMPHOUSE**

- REHABILITATE AND STABILIZE BUILDING
- REVEAL AND REBUILD PUMPHOUSE ARCHES
- IMPROVE ADA ACCESS
- INTERIOR FINISH-OUT

## **RACEWAY**

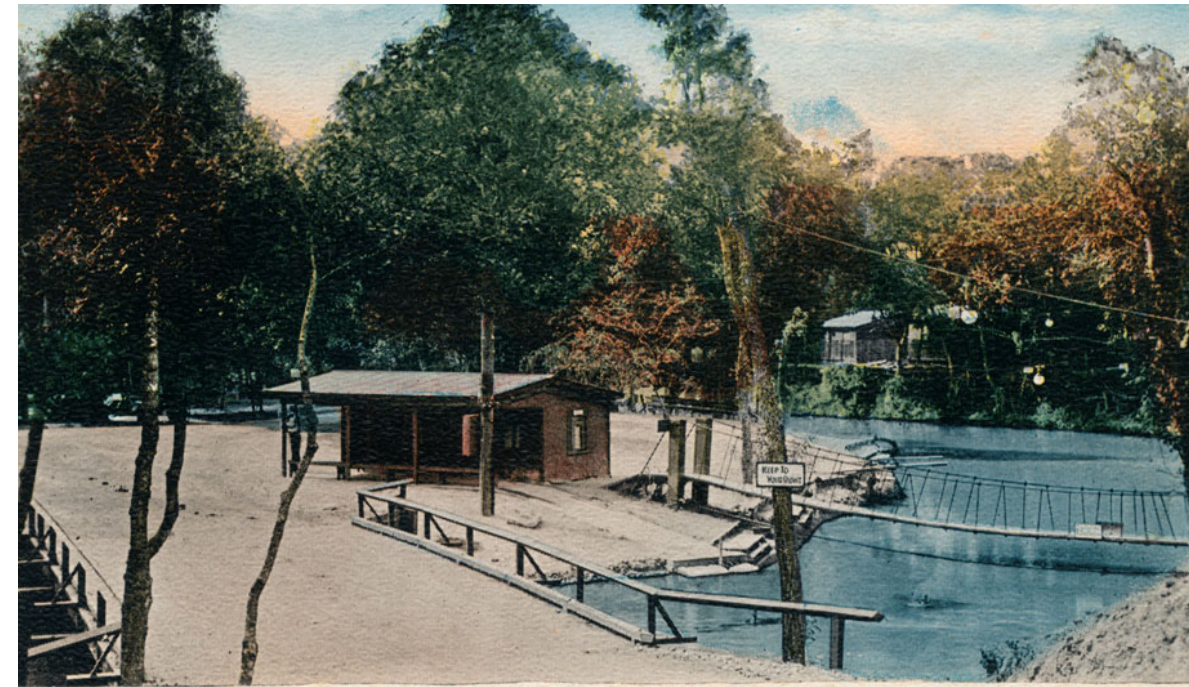
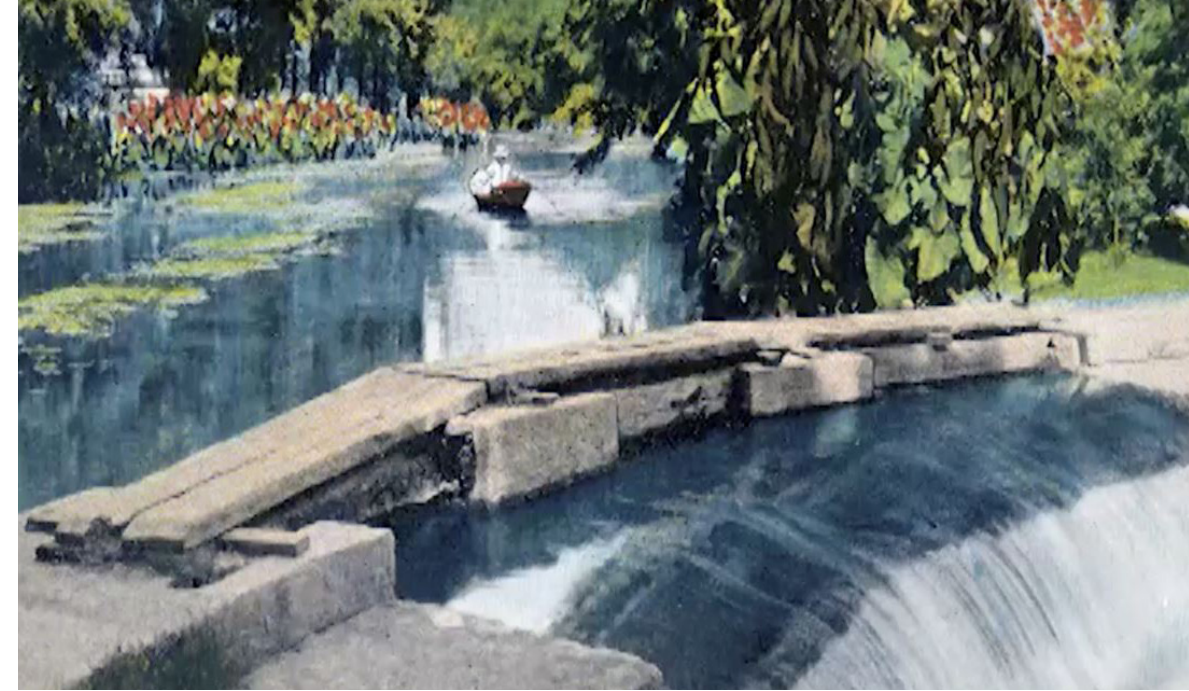
- RE-WATER HISTORIC RACEWAY

## **LAMBERT BEACH**

- REPAIR & REBUILD HISTORIC RIVER WALLS & STAIRS
- REBUILD HISTORIC STAIRCASE

## **SITE IMPROVEMENTS**

- GRADING & EARTHWORK IMPROVEMENTS
- PEDESTRIAN CIRCULATION IMPROVEMENTS
- NATIVE PLANTING
- TREE REMOVAL & MITIGATION
- INTERPRETATION OF CULTURAL RESOURCES
- UTILITIES CONSOLIDATION
- HARDSCAPE REMOVAL
- GATHERING SPACES





# SCOPE PHASING

E. HILDEBRAND AVE.

SAN ANTONIO ZOO

BRACKENRIDGE RD.

MIRAFLORES PARK

## PHASE II

### ACEQUIA AND UPPER LABOR ZONE

- RESTORE UPPER LABOR LILY POND
- UNCOVER & STABILIZE UPPER LABOR DAM
- DREDGE & REPAIR HISTORIC ACEQUIA
- REHABILITATE HISTORIC PUMPHOUSE
- IMPROVE PEDESTRIAN CIRCULATION
- REVEAL HISTORIC PUMPHOUSE ARCHES
- REDUCE UNPRODUCTIVE HARDSCAPE
- RE-WATER THE HISTORIC RACEWAY
- PROVIDE NATIVE TREES & PLANTING
- GRADING & EARTHWORK STABILIZATION
- UTILITIES CONSOLIDATION
- INTERPRET HISTORIC FEATURES
- PROVIDE CONNECTION TO FUTURE SPIRIT REACH TRAIL

## PHASE I

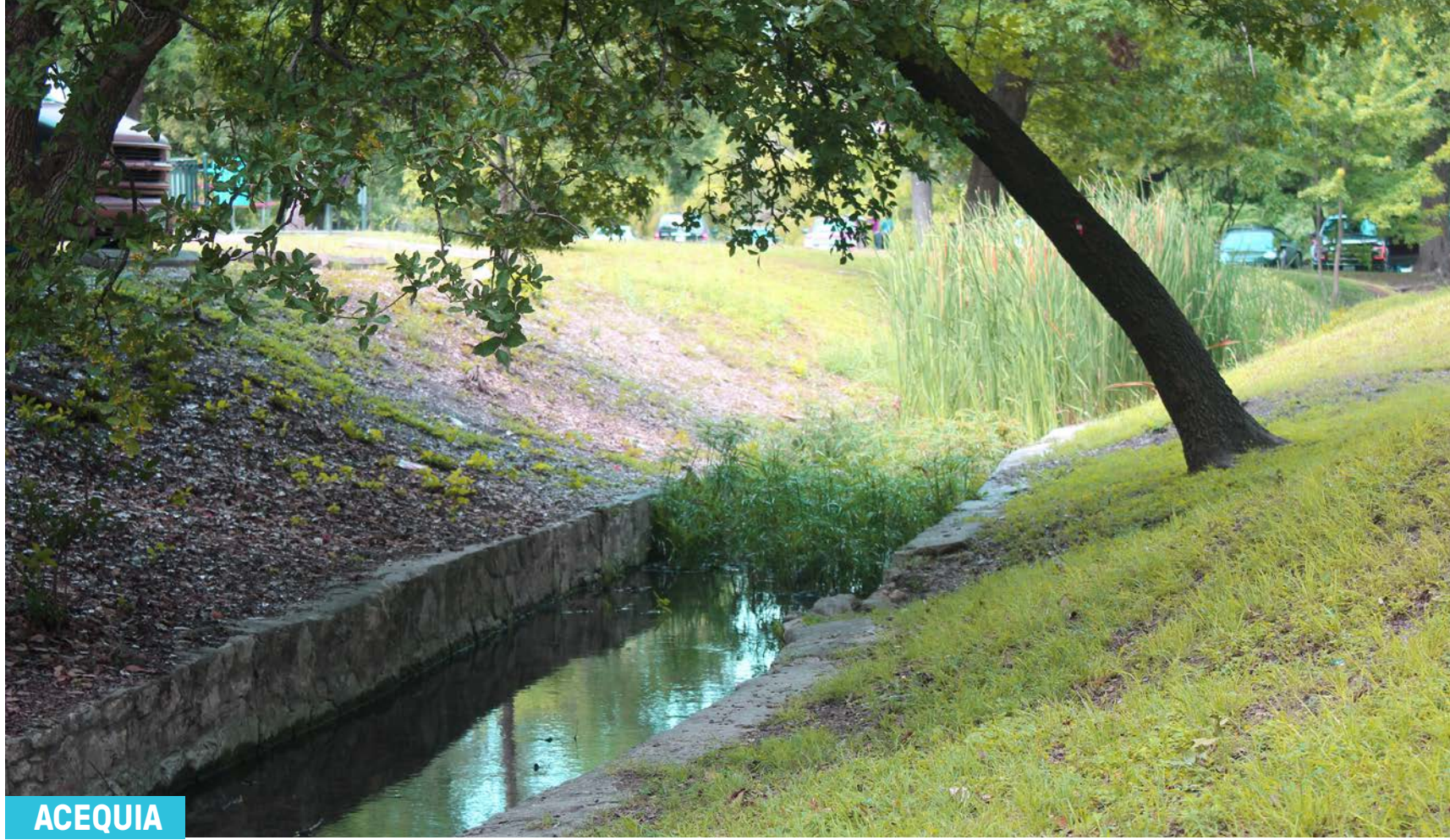
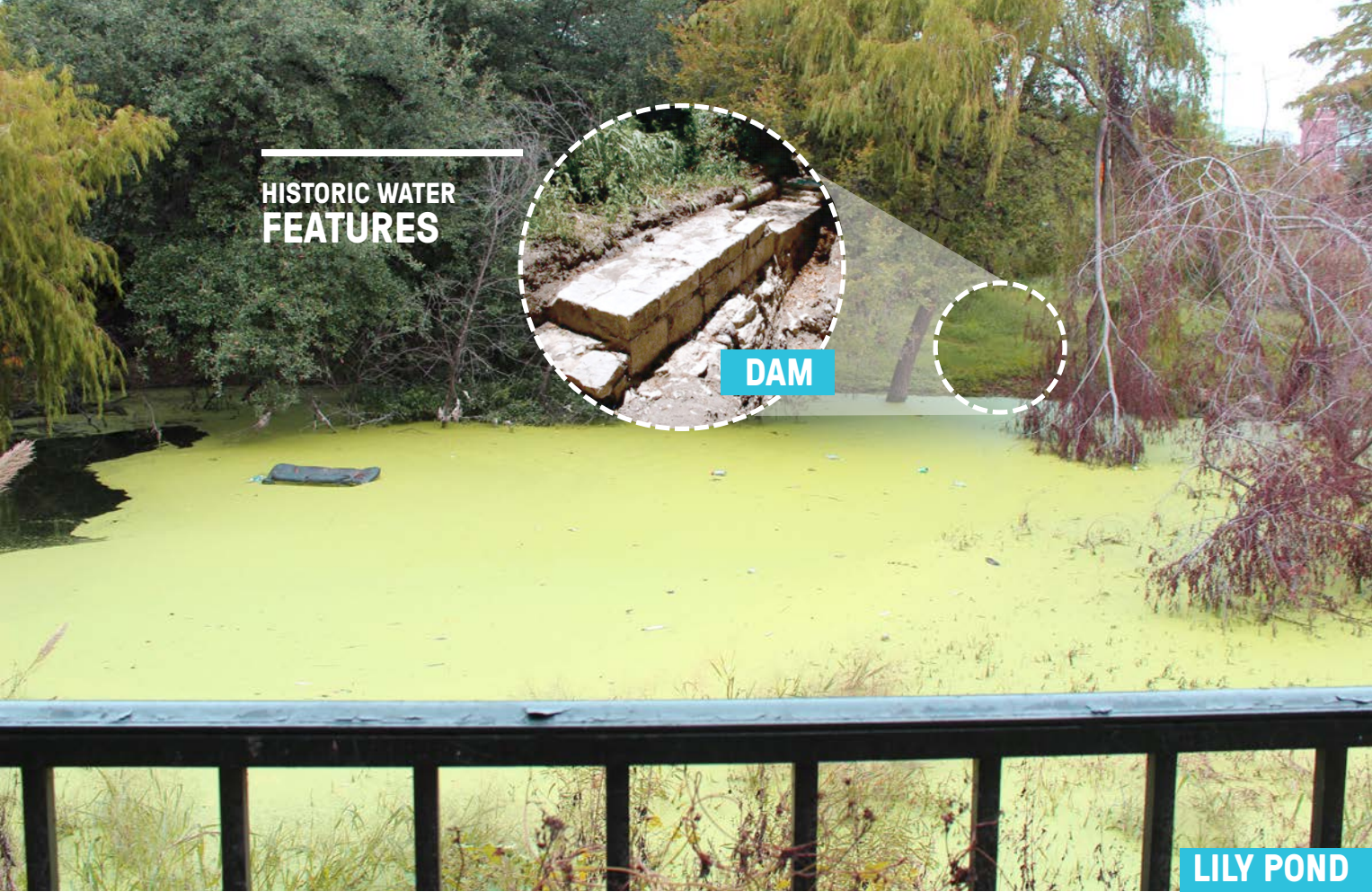
### LAMBERT BEACH ZONE

- REPAIR & STABILIZE RIVER SIDE OF PUMPHOUSE
- REPAIR & REBUILD LAMBERT BEACH WALLS/STAIRS
- REBUILD HISTORIC STAIRCASE ON NE SIDE OF LAMBERT BEACH
- GRADING & EARTHWORK IMPROVEMENTS
- REMOVE TREES IMPACTING CULTURAL RESOURCES

SAN ANTONIO ZOO

BRACKENRIDGE WAY





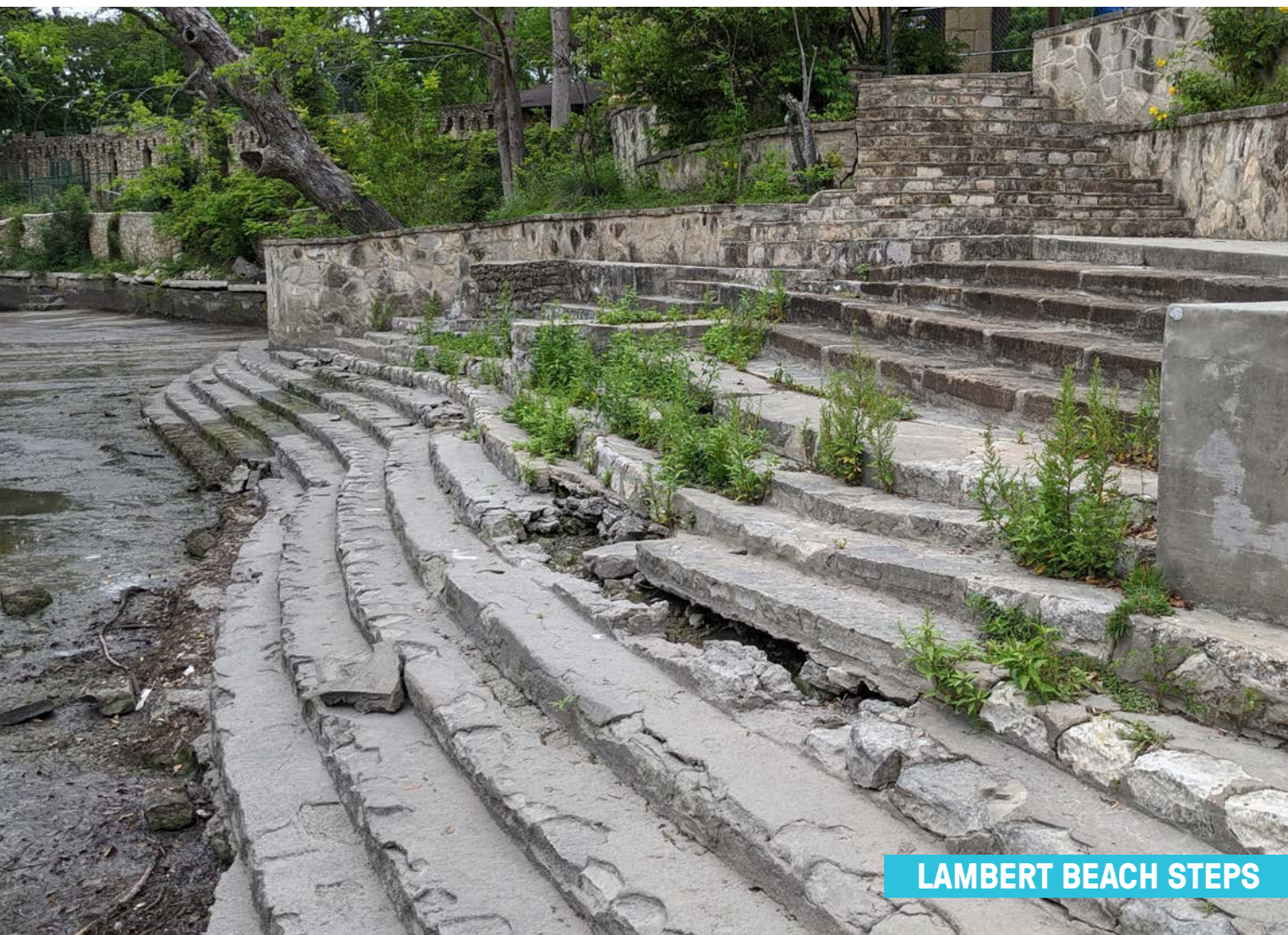




PUMPHOUSE



PUMPHOUSE



LAMBERT BEACH STEPS



LAMBERT BEACH WALLS



---

## LAMBERT BEACH WALLS





## 04 // PROJECT CONSIDERATIONS



## FLOODWAY & ECOLOGY



WATER QUALITY



BIODIVERSITY



STRUCTURAL STABILITY OF CULTURAL RESOURCES



EROSIVE FORCES & FLOODWAY IMPACTS



## TREE CHALLENGES



DEGRADATION OF CULTURAL RESOURCES



OVERPOPULATION / ENVIRONMENTAL STRAIN



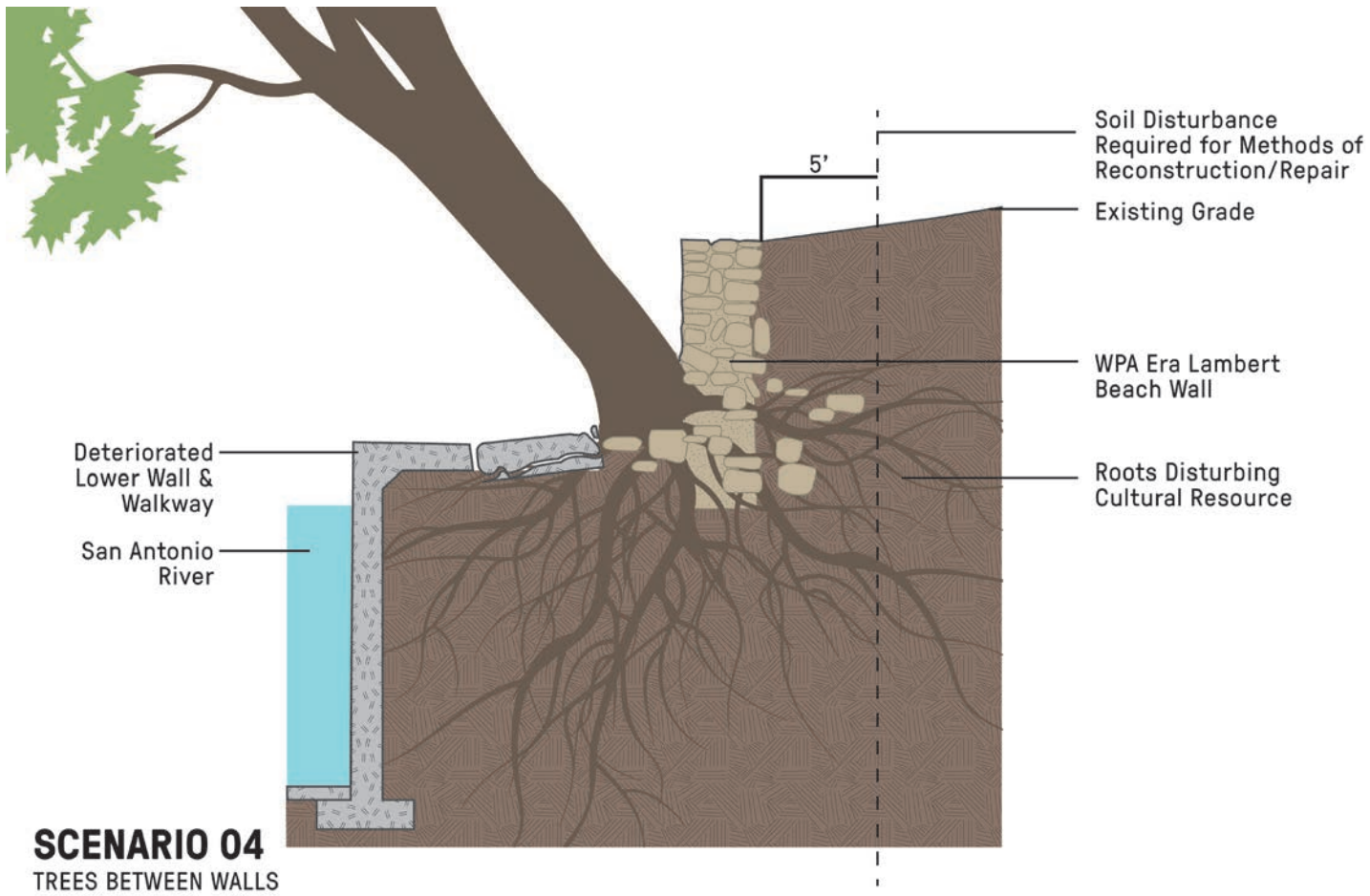
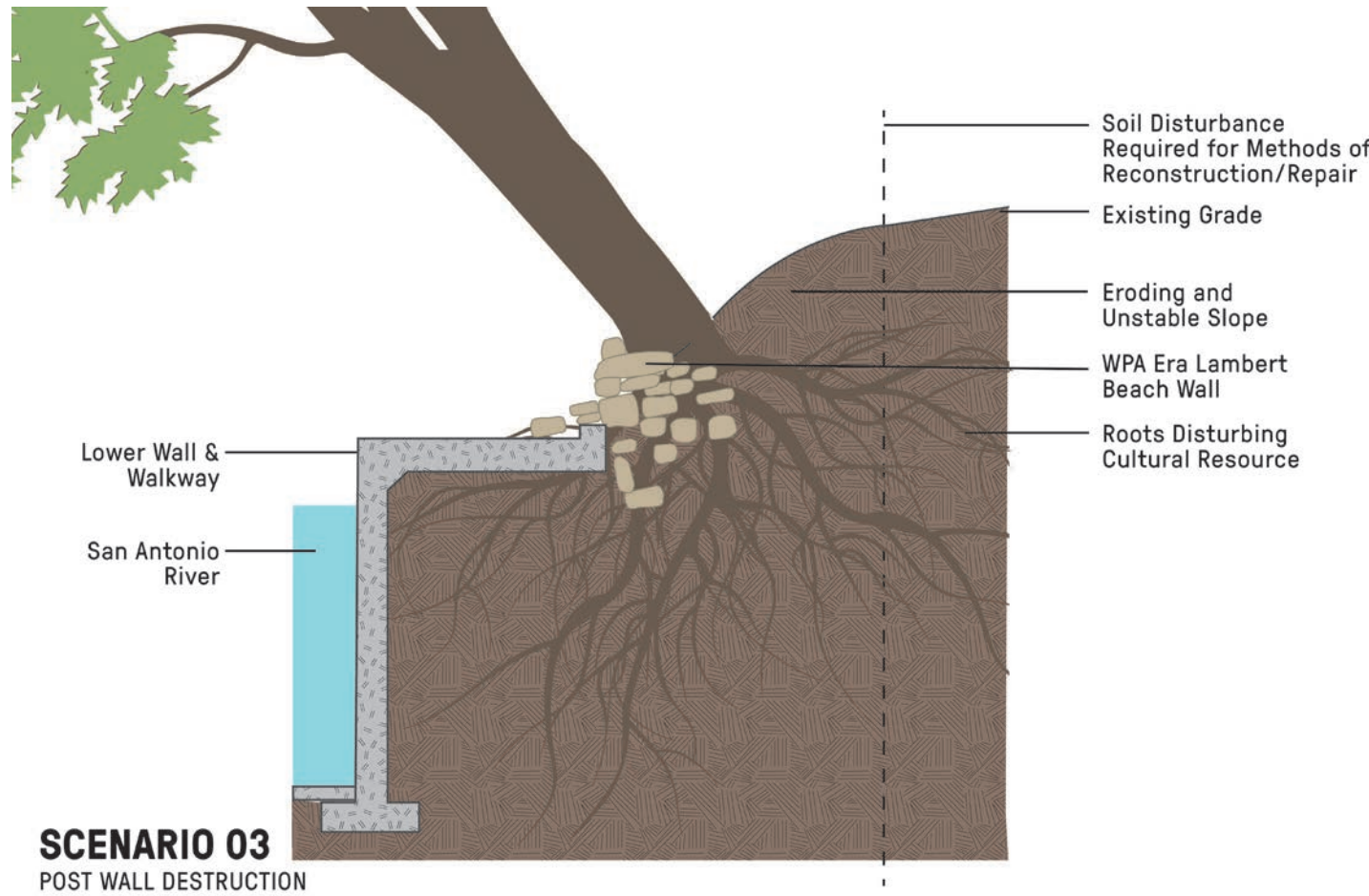
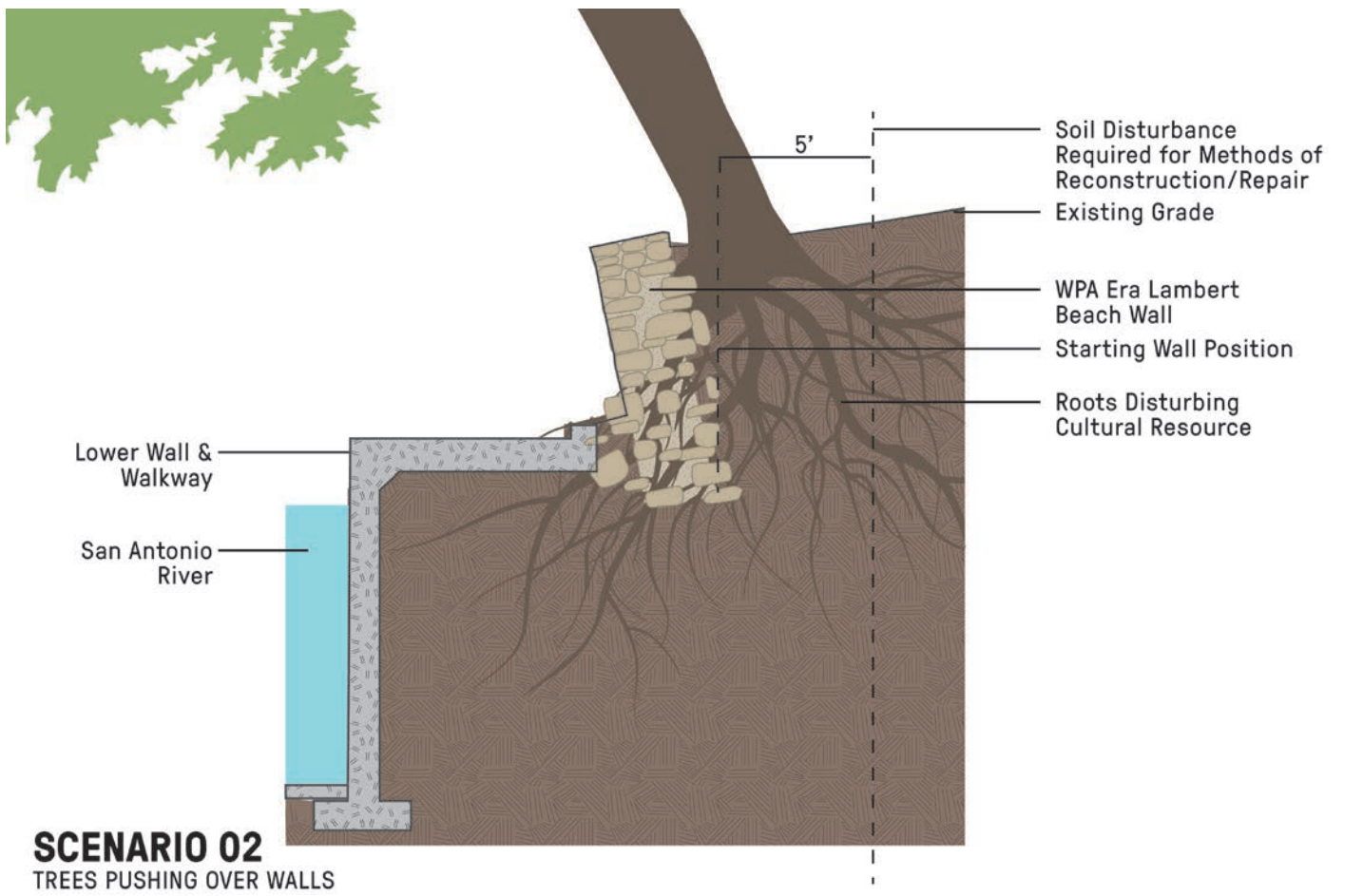
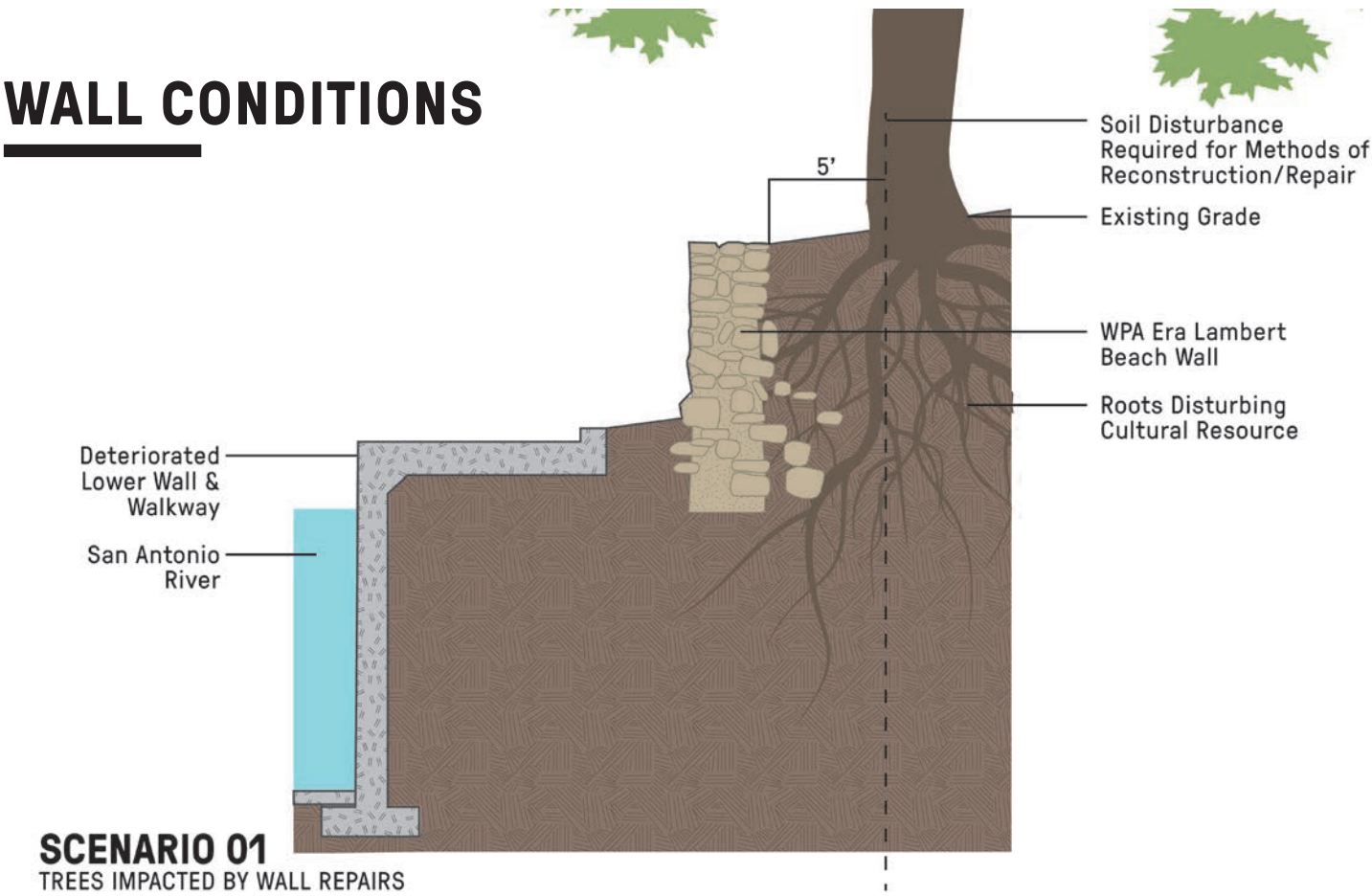
IMPACTED ROOT ZONES



VOLUNTEER SPECIES



# WALL CONDITIONS







**APPROVAL BY REGULATORY AGENCIES**

**ACCESSIBILITY & SAFETY**



**LONGEVITY & SUSTAINABILITY**



**STRUCTURAL INTEGRITY**



**HISTORICAL AUTHENTICITY**



# 05 // INTERACTIVE WORKSHOP



## **INTERACTIVE WORKSHOP**

---

**01**

### **VISIT AMENITIES & RESOURCES BOARDS AT THE BACK OF THE ROOM**

Natural Resources, Historic Resources, Historic Park Use, Present Park Use

**02**

### **ASK QUESTIONS / PROVIDE INPUT**

Write down questions/comments and place on storyboards

**03**

### **ENGAGE WITH EXPERTS**

Historians, Environmentalists, River Engineers, Landscape Architects, and Architects will answer questions and provide feedback

**04**

### **FOLLOW UP**

Attend Meeting 02 to hear summary of public feedback



SCAN QR BELOW  
FOR FURTHER COMMENTS





# brackenridge park

A POSTCARD PLACE LOST IN TIME

PUBLIC STAKEHOLDER MEETING #01

22 MARCH 2022

