



SYSTEMWIDE PARKS AND RECREATION MASTER PLAN

Initial Community Meetings



SYSTEMWIDE PARKS AND RECREATION MASTER PLAN

“ The master plan will provide inspiration, a clear vision, and an actionable guide for Buncombe County’s parks, recreation facilities, greenways, trails, and open spaces. ”



SYSTEMWIDE MASTER PLAN

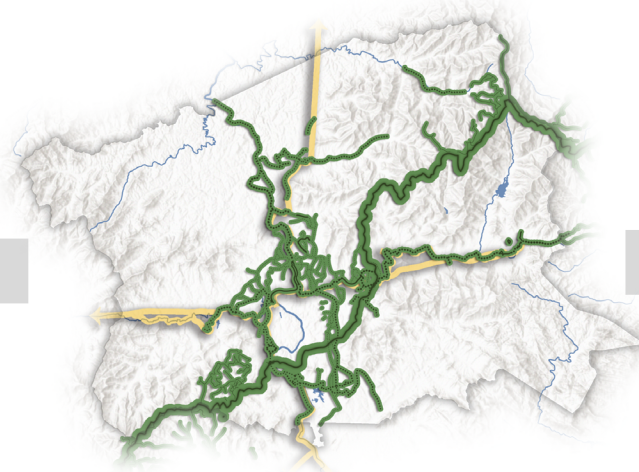
THREE EFFORTS IN ONE

PARKS AND RECREATION MASTER PLAN



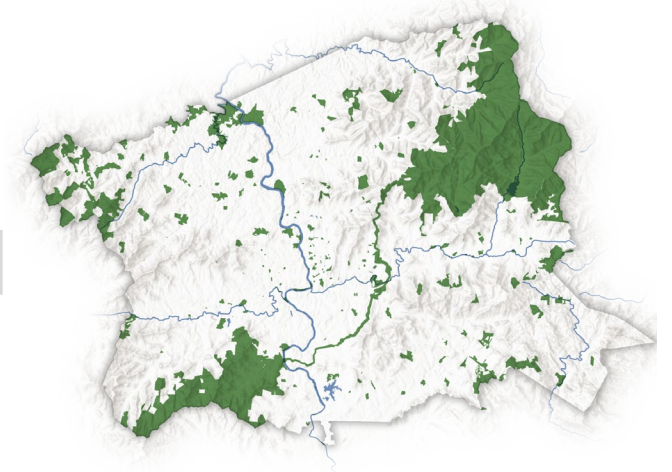
Will build upon and replaces the County's prior 2008 Master Plan with a focus on parks, athletic and aquatic facilities, community centers, river park, and recreation programming with greenways, trails, and open space recommendations incorporated.

GREENWAYS AND TRAILS MASTER PLAN



Will build upon and replaces the County's prior 2012 Master Plan with a focus on planning and implementing a regional greenways and trails systems that connects residents and visitors to the unique character and destinations of Buncombe County.

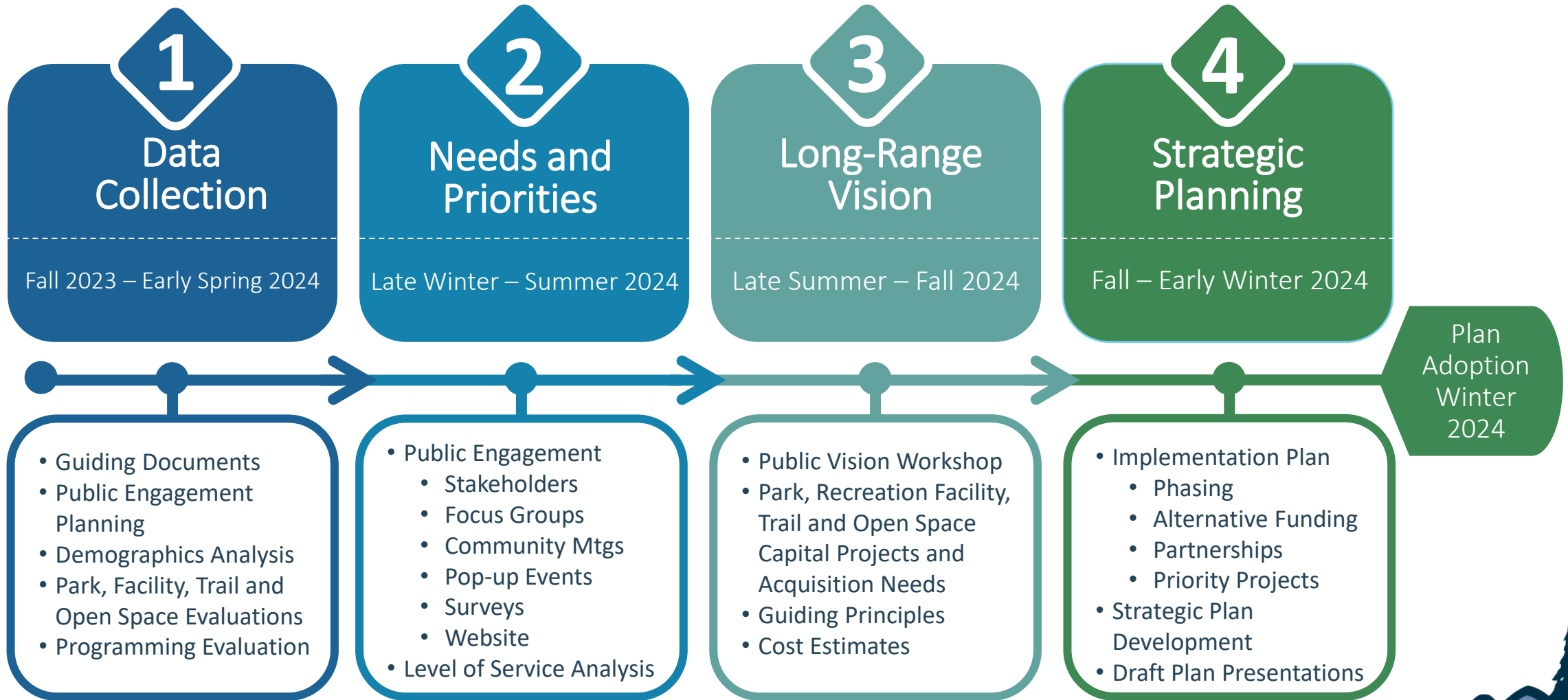
OPEN SPACE PLAN



Develops the County's first plan that focuses on undeveloped – or minimally developed – land, conserved to protect natural and cultural resources, wildlife, increases quality of life, and provides public access to passive recreational activities.



PLANNING PROCESS AND SCHEDULE



WHERE ARE WE TODAY?

DATA COLLECTION



BUNCOMBE COUNTY 2043

COMPREHENSIVE PLAN VISION THEMES

STRIVE TO ACHIEVE EQUITY



Buncombe County will strive to address social, economic, and environmental inequities by repairing and investing in historically disadvantaged communities and replacing inequitable land use and transportation policies and regulations.

COMMIT TO SUSTAINABILITY



Growth and change in the county will be sustainable and achieve resilience to hazards, conversion to renewable energy systems, protection of natural resources, and support a sustainable local economy in a manner that meets the needs of the present without compromising the ability of future generations to meet their own needs.

ACHIEVE LIVABILITY AND AFFORDABILITY



Residents will have safe, accessible, and affordable housing and multi-modal transportation choices to create a more connected, walkable, healthy community that accommodates the diverse needs of residents. Buncombe County will attract quality jobs that support higher wages and enable livability and affordability.

FOCUS ON CONSERVATION

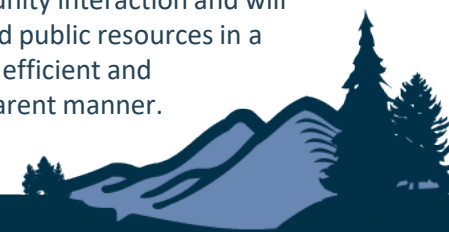


Natural resources, farms, and rural lands provide picturesque landscapes and water systems; local food systems; healthy water, air, and soil quality; and opportunities for nature and recreation-based economic development. The County will prioritize conservation efforts to protect these land, water, and air resources.

ROOT EFFORTS IN COMMUNITY



County decision-making will be rooted in the outcomes of engagement efforts with residents, landowners, and business owners and supported by data. The County will support opportunities for community interaction and will steward public resources in a fiscally efficient and transparent manner.





BUNCOMBE COUNTY PARKS & RECREATION

- ✓ Parks and Recreation Department is leading this effort with the assistance of multiple County departments, partner agencies, and stakeholders.
- ✓ Development of a Comprehensive Master Plan represents a monumental milestone in the history of the Department.
- ✓ With a horizon of priorities and needs over the next 20+ years, this effort will have specific actions for Department staff for immediate implementation, a focused strategic plan for the next 5-years, and long-term recommendations for 20+ years.

FAST FACTS

STAFF & FACILITIES

- Number of Employees: 13 FTEs, 10 PTEs
- Annual Budget: \$2,512,650
- Community Recreation Grant Administration
 - 17 community nonprofits received grants this year totaling \$96,287.22
- Total of **677.36 Park Acres**
- Park System Consists of:
 - 8 Parks
 - 7 River Parks
 - 3 Community Centers
 - 5 Pools
 - 1 Nature Preserve

PROGRAMS & EVENTS

- 26 CORE (Community Outreach and Recreation Experience) events last year
- **Major Events:** Special Olympic Spring Games, 4th of July at Lake Julian, Festival of Lights at Lake Julian
- **Other events:** Fishing Tournaments, Bike Rodeo, Birdwatching, Drum Circle, Outdoor Family Campouts, Fall Festival, Guided Day Hikes, Earth Day
- **New Events for 2024:** Doggie Extravaganza, Day camp for Spring Break
- Local and Regional Tournaments that take place in BC Parks:
 - Spring Riverside Soccer Shootout
 - NCYSA Kepner Cup Soccer Tournament
 - Carpetbagger Lacrosse Tournament
 - Flag Football World Championship Tour
 - Blue Ridge Classic (Lacrosse)
 - Ultimate HoDown Showdown (Ultimate Frisbee)
 - Summer Riverside Shootout
 - Beer City Cup

The above figures represent the strength, facilities, and services of the Buncombe County Parks and Recreation Department (2024)



PARKS AND RECREATION SYSTEM

EXISTING FACILITIES AND LOCATIONS

Parks

- Bent Creek Community Park
- Buncombe County Sports Park
- Cane Creek Fields and Pool
- Charles D. Owen Park
- Hominy Valley Park and Pool
- Karpen Soccer Fields
- Lake Julian Park
- North Buncombe Park and Pool

Buncombe County Owned Community Centers

- Big Ivy Community Center
- Beech Community Center
- Sandy Mush Community Center

Outdoor Pools

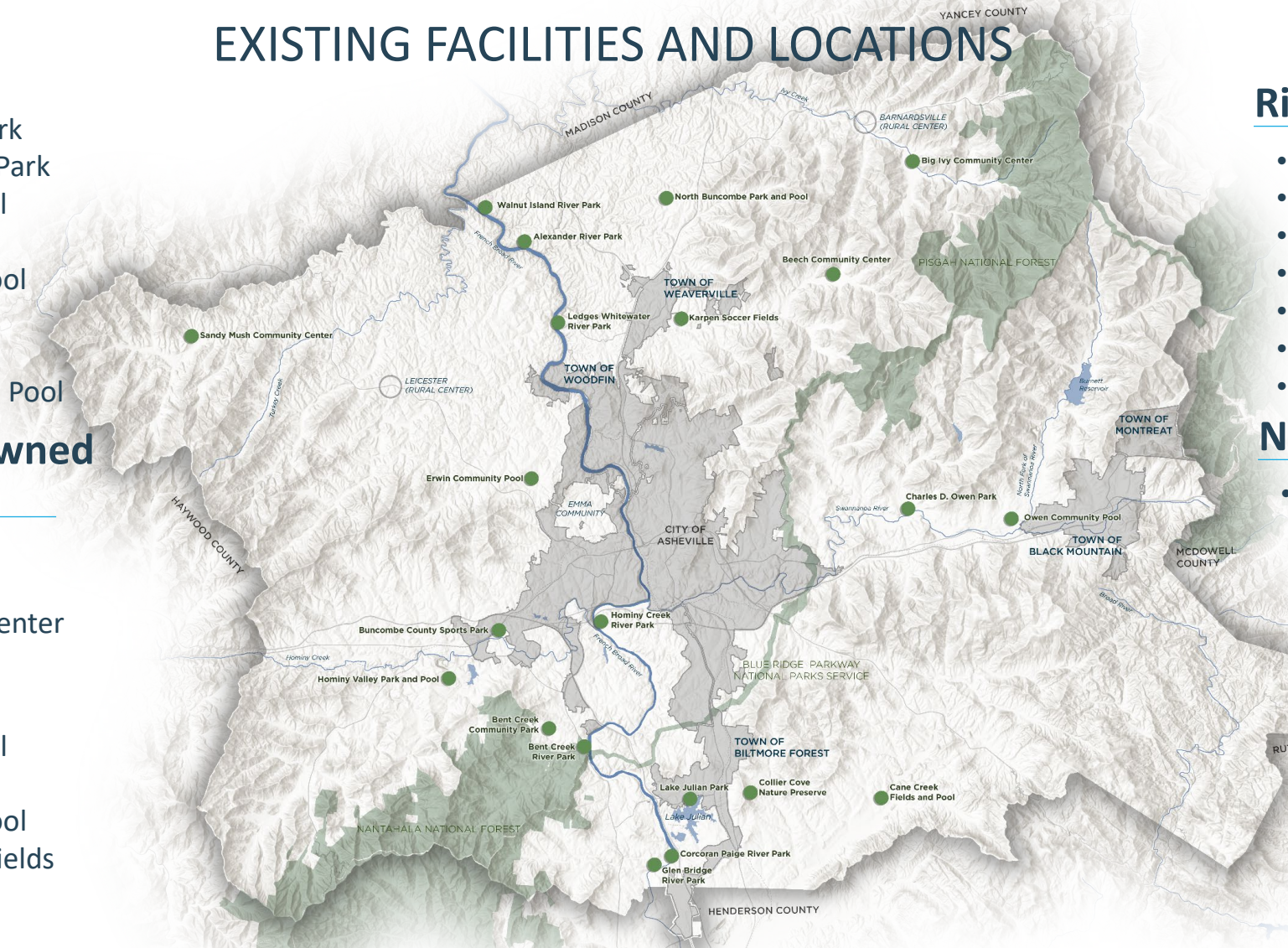
- Cane Creek Fields and Pool
- Erwin Community Pool
- Hominy Valley Park and Pool
- North Buncombe Pool & Fields
- Owen Community Pool

River Parks

- Alexander River Park
- Bent Creek River Park
- Corcoran Paige River Park
- Glen Bridge River Park
- Hominy Creek River Park
- Ledges Whitewater Park
- Walnut Island River Park

Nature Preserve

- Collier Cove Nature Preserve



PARKS AND RECREATION SYSTEM

RECENT PROJECT HIGHLIGHTS



Buncombe County Sports Park

- Two (2) bow wow tunnels, hoop and play equipment added
- Additional seating
- Gravel and drainage improvements

Buncombe County Disc Golf Course

- Relocating holes affected by field project
- Removal of hazardous trees

Buncombe County Sports Park

- Added new prefab restroom installed (field 9)
- EV charger

Lake Julian

- Installed retaining wall at fisherman trail entrance
- Drainage improvements

Lake Julian

- Removal of current bathroom facility
- New prefab restroom

Hominy Creek and Bent Creek River Parks

- Replacement of picnic tables
- ADA pad, sidewalk to picnic table (Hominy)

Buncombe County Sports Park

- Installed artificial turf on fields 1, 2 & 8
- Installed fencing for fields
- Installed field lighting

Buncombe County Sports Park

- Repaved existing parking and roadways
- Turn lane addition
- Traffic calming
- Additional parking added
- Lighting added to parking (field 8)

Buncombe County Sports Park

- Repaired bocce ball courts
- Soccer field netting installation
- Wi-Fi installation
- New furnishings



Buncombe County Sports Park

- Adding restroom facility with shade structure for field 8
- Relocation of waterline

TDA Grant for Enka Recreation Destination Phase 2

- \$4.05 million awarded
- Includes artificial turf for fields 3, 4, 5 & 9
- Lighting for fields 3, 4 & 5
- Design in 2024



GREENWAY & TRAIL SYSTEM

RECENT PROJECT HIGHLIGHTS



Woodfin Greenway

- Comprised of two (2) projects/ segments:
 - Hwy 251/Riverside Drive Section
 - Beaverdam Creek Section
- 4.5 miles total
- Hwy 251 section ROW in 2024
- Beaverdam Creek section in preliminary engineering

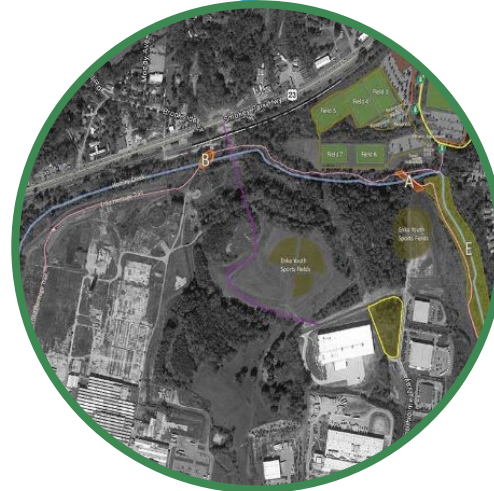
Enka Heritage Trail

- 1.75 miles total
- Preliminary engineering phase
- Environmental hazards mitigation
- Changing termini due to feasibility issues



Ferry Road Development Greenway

- Approximately 1.5 miles of greenways
- Integrated into an affordable housing development
- Progressing into design in 2024.



OPEN SPACE

COMPREHENSIVE PLAN 2043



✓ **Goal:** Conserve 20% of the County's total acreage by 2030 (84,096 acres).

- Protect natural environments that support clean water, provide habitat for wildlife, offer nature-based recreation, and provide picturesque rural views will be conserved.
- Protect farms, forests, and other working lands for the benefit of current future generations.

Policy 1: Preserve Buncombe County's working farms and forests.

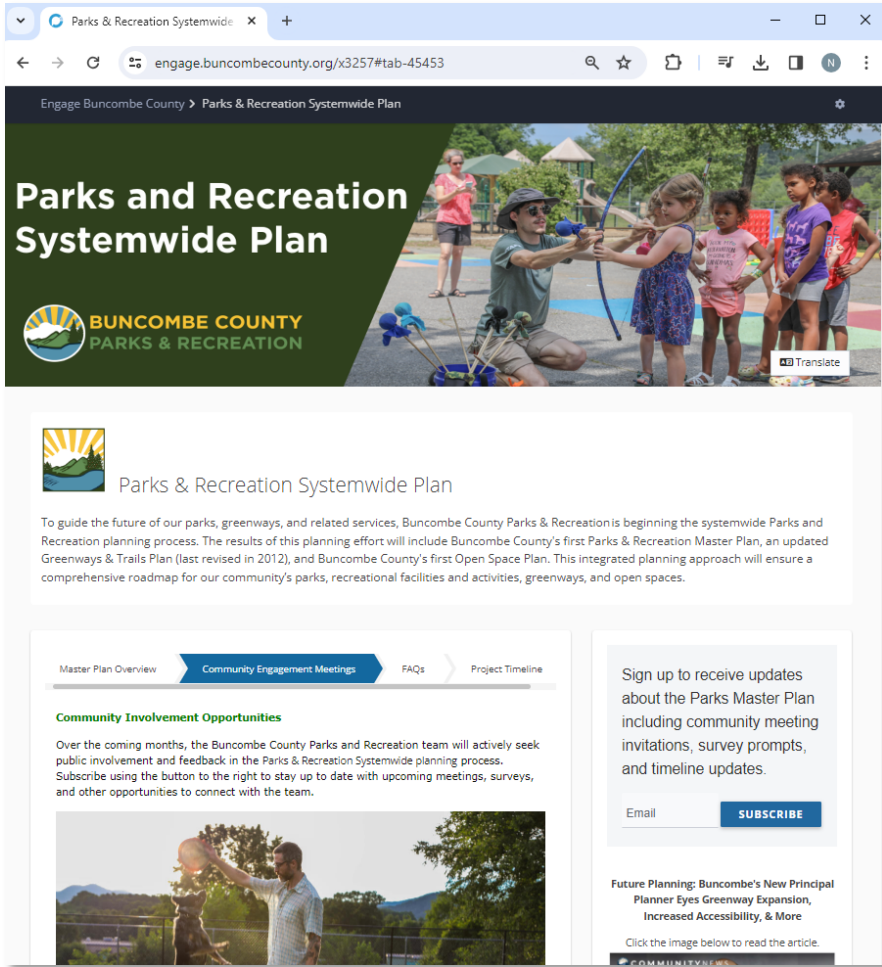
Policy 2: Preserve Buncombe County's natural heritage.

Policy 3: Promote ecosystem enhancement and restoration projects across public and private lands.



STAYING ENGAGED

ADDITIONAL & FUTURE OPPORTUNITIES



- ✓ **Community Meeting #2:**
 - March 21, 2024 at 5 p.m.
 - Enka High School (Enka Lake Road)
- ✓ **Visit project website**
 - Scan QR now to visit. Bookmark and visit for updates
 - Sign up to receive updates
- ✓ **Complete a survey**
 - Scan QR now to access online survey
 - Encourage others to complete survey as well

Scan QR Code to access project webpage today.



INSTRUCTIONS

INTERACTIVE EXERCISES





PARKS & RECREATION

STATION 1 INTERACTIVE EXERCISES

What activities do you or members of your household currently participate in or have a desire to participate?

Directions: Place a green dot if you currently participate in the activity. Place a yellow dot if you have a desire to participate in the activity or would like more access to this activity.

● = Currently Use ● = Need

NATURAL/OUTDOOR PASSIVE ACTIVITIES

Fishing (Fly or Spin/Fresh) Hiking Biking (Leaved) Kayaking/Canoeing Sailing Rowing

Exercise/Outdoors Picnicking Walking Viewing/Observing Wildlife Birdwatching

Camping (Tent/Primitive) Archery

AQUATICS

Swimming for Fun Water Fitness

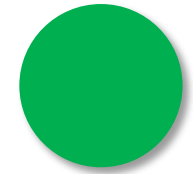
Therapeutic/Warm Water Competitive Diving/Lap Swimming

Spa/Hot Tub Lane to Swim

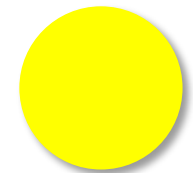
OTHER ACTIVITIES (WRITE-IN)

STATION 1: PARKS & RECREATION

- 1) Use the green and yellow stickers provided.
- 2) Place a sticker on the image if the following applies:



If you **currently participate** in the activity. *(does not have to be at a Buncombe County facility)*



If you have a **desire to participate** in the activity or would like more access to the activity.





GREENWAYS & TRAILS

STATION 2 INTERACTIVE EXERCISES

BUNCOMBE COUNTY PARKS & RECREATION

Q1. What type of greenway or trail surface do you prefer? (Select up to two)
 Q1. What type of greenway or trail surface do you prefer? (Select up to two)
 Directions: Use the provided stickers to select your answer(s).
 Directions: Use the provided stickers to select your answer(s).

Q2. What amenities do you desire most along greenways and trails? (Select all that apply)
 Q2. What amenities do you desire most along greenways and trails? (Select all that apply)
 Directions: Use the provided stickers to select your answer(s).
 Directions: Use the provided stickers to select your answer(s).

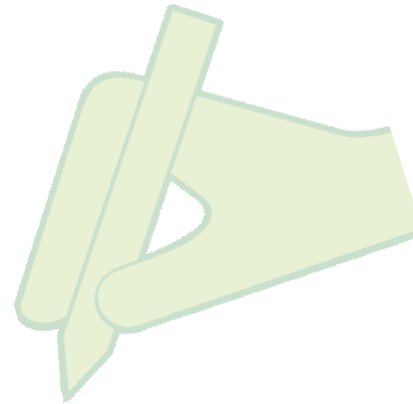
Q3. What reason(s) prevent you from accessing or using greenways or trails more often? (Select all that apply)
 Q3. What reason(s) prevent you from accessing or using greenways or trails more often? (Select all that apply)
 Directions: Use the provided stickers to select your answer(s).
 Directions: Use the provided stickers to select your answer(s).

Q4. What improvements to greenways and trails are most important to you and your household? (Select up to 5)
 Q4. What improvements to greenways and trails are most important to you and your household? (Select up to 5)
 Directions: Use the provided stickers to select your answer(s).
 Directions: Use the provided stickers to select your answer(s).

Take the Online Survey today!
 Take the Online Survey today!
 We want to hear from you!
 We want to hear from you!
 Scan the QR code to get involved and learn more or visit www.publii.org/buncombe or call [704.253.7272](tel:7042537272).

STATION 2: GREENWAYS & TRAILS
STATION 2: GREENWAYS & TRAILS

- 1) Use the provided stickers to select your answer(s).
- 2) Question may limit your selection by number.



Write in your response on the board for select questions if your answer is not available.





OPEN SPACES

STATION 3 INTERACTIVE EXERCISES

Q1. How do you like to enjoy open space in Buncombe County? (Select all that apply)

Q1. How do you like to enjoy open space in Buncombe County? (Select all that apply)

Directions: Use the provided stickers to select your answer(s).
Directions: Use the provided stickers to select your answer(s).

I enjoy the visual aesthetic of the open space.
I enjoy the visual aesthetic of the open space.

I enjoy passive recreation opportunities within natural spaces.
I enjoy passive recreation opportunities within natural spaces.

I enjoy preservation of agricultural and other productive open spaces.
I enjoy preservation of agricultural and other productive open spaces.

I enjoy conservation and protection of natural resources.
I enjoy conservation and protection of natural resources.

I enjoy learning about the historical/cultural resources.
I enjoy learning about the historical/cultural resources.

I enjoy volunteering for the long-term stewardship of open spaces.
I enjoy volunteering for the long-term stewardship of open spaces.

I value open space as a tourism-related asset for our community.
I value open space as a tourism-related asset for our community.



Take the Online Survey today!
Take the Online Survey today!
We want to hear from you!
We want to hear from you!

Scan the QR code to get involved and learn more
or visit www.buncombecounty.org/parks
Scan the QR code to get involved and learn more
or visit www.buncombecounty.org/parks



Q2. Which two actions would you most like to see implemented by Buncombe County? (Select up to 2)

Q2. Which two actions would you most like to see implemented by Buncombe County? (Select up to 2)

Directions: Use the provided stickers to select your answer(s).
Directions: Use the provided stickers to select your answer(s).

Designate targeted areas for preservation of open space to achieve balance between rural landowners and the public-at-large.
Designate targeted areas for preservation of open space to achieve balance between rural landowners and the public-at-large.

Permanently preserve agricultural land capable of supporting biological diversity or agricultural production.
Permanently preserve agricultural land capable of supporting biological diversity or agricultural production.

Permanently protect natural, forestry and historic spaces that are of high value to our community and the natural world (or native species and wildlife).
Permanently protect natural, forestry and historic spaces that are of high value to our community and the natural world (or native species and wildlife).

Prioritize acquisition of open space for public access and use.
Prioritize acquisition of open space for public access and use.

Work with rural landowners to preserve open space by easement acquisitions or donation and/or incentives.
Work with rural landowners to preserve open space by easement acquisitions or donation and/or incentives.

Integrate preservation of agricultural land with natural resource protection.
Integrate preservation of agricultural land with natural resource protection.

Develop comprehensive inventory of open space quality, sensitive species/habitats, and natural/cultural resources.
Develop comprehensive inventory of open space quality, sensitive species/habitats, and natural/cultural resources.



STATION 3: OPEN SPACE
STATION 3: OPEN SPACE

- 1) Use the provided stickers to select your answer(s).
- 2) Question may limit your selection by number.





STATION 4

INTERACTIVE EXERCISES

BUNCOMBE COUNTY PARKS & RECREATION

What are the most important outcomes you would like to see from the Buncombe County Systemwide Parks and Recreation Master Plan? (Select up to 5)

What are the most important outcomes you would like to see from the Buncombe County Systemwide Parks and Recreation Master Plan? (Select up to 5)

Directions: Use the provided stickers to select your answer(s).

Directions: Use the provided stickers to select your answers.

<p>Improvement to physical and mental well-being through enhancement of sport and active recreational opportunities and quality of existing and new recreation facilities. <small>Enhancement of physical and mental well-being through enhancement of sport and active recreational opportunities and quality of existing and new recreation facilities.</small></p>	<p>Complement infrastructure investments with strategic planning and development of parks, trails, and access to open space. <small>Complement infrastructure investments with strategic planning and development of parks, trails, and access to open space.</small></p>
<p>Development of new parks and facilities that are flexible and adaptive to future community and environmental changes. <small>Development of new parks and facilities that are flexible and adaptive to future community and environmental changes.</small></p>	<p>Concentration of preserved land in large, relatively contiguous blocks to support long-term resource protection. <small>Concentration of preserved land in large, relatively contiguous blocks to support long-term resource protection.</small></p>
<p>Improvement in variety and quality of recreation opportunities and activities readily accessible to all. <small>Improvement in variety and quality of recreation opportunities and activities readily accessible to all.</small></p>	<p>Identification, protection, and restoration of open lands that support natural habitats, ecological functions, and resource-based industries. <small>Identification, protection, and restoration of open lands that support natural habitats, ecological functions, and resource-based industries.</small></p>
<p>Expansion of local, state, and federal partnerships to leverage improvements to parks, trails, and open space opportunities. <small>Expansion of local, state, and federal partnerships to leverage improvements to parks, trails, and open space opportunities.</small></p>	<p>Reflection of natural and cultural heritage as a priority in parks, along trails, and within open spaces. <small>Reflection of natural and cultural heritage as a priority in parks, along trails, and within open spaces.</small></p>
<p>Increased recognition of parks, trails, and open space as benefits to the local economy and quality of life. <small>Increased recognition of parks, trails, and open space as benefits to the local economy and quality of life.</small></p>	<p>Advancement of multi-modal accessibility with the continued implementation of a network of greenways and trails. <small>Advancement of multi-modal accessibility with the continued implementation of a network of greenways and trails.</small></p>
<p>To the greatest degree feasible, provide access to recreation opportunities in proximity to population areas. <small>To the greatest degree feasible, provide access to recreation opportunities in proximity to population areas.</small></p>	<p>Concentration of trail development opportunities to highlight Buncombe County's unique rural and heritage experiences. <small>Concentration of trail development opportunities to highlight Buncombe County's unique rural and heritage experiences.</small></p>
<p>Improvement and expansion of Buncombe County park facilities and greenways. <small>Improvement and expansion of Buncombe County park facilities and greenways.</small></p>	

Take the Online Survey today!
Take the Online Survey today!
We want to hear from you!
We want to hear from you!

Scan the QR code to get involved and learn more or visit www.publicinput.com/bcparks
Scan the QR code to get involved and learn more or visit www.publicinput.com/bcparks

STATION 4: SYSTEMWIDE MASTER PLAN PRIORITIES
STATION 4: SYSTEMWIDE MASTER PLAN PRIORITIES

Parks & Recreation **Greenways & Trails** **Open Space**

- 1) Use the provided stickers to select your answer(s).
- 2) Select up to **FIVE (5)** outcomes.





STATION 5

INTERACTIVE EXERCISES

Scan QR Code to access online survey (English)



- 1) Scan QR code on sign or slide to access online survey questionnaire, or
- 2) Use a tablet at the table to complete the survey tonight
- 3) Take as many handout cards and encourage others to complete a survey

Let your voice be heard today.
Spanish text

As part of the Buncombe County Systemwide Parks and Recreation Master Plan, County staff and their consultant team are seeking input as the County begins to identify park, recreation facility, greenway and trail, and open space needs and opportunities.

Please take the time to assist us in this effort. This survey is voluntary and will take **approximately 12-14 minutes** to complete. Your responses will be helpful for the planning team to learn about your preferences and usage as well as needs and priorities.

We greatly appreciate your time and efforts to improve the quality of life in Buncombe County.

Be sure to finish all questions as each is important to hearing your input.

Instructions:
Scan the QR code to complete a survey on your own device or complete a survey on one of the tablets here. If you have any questions, County staff and the consultant team are here to assist.

Scan the QR code to complete a survey on your own device or complete a survey on one of the tablets here. If you have any questions, County staff and the consultant team are here to assist.



Spanish: Scan QR Code to access online survey





SYSTEMWIDE PARKS AND RECREATION MASTER PLAN

Thank you

Questions and Answers

